

JUMO GmbH & Co. KG
Delivery address: Mackenrodtstraße 14,
36039 Fulda, Germany
Postal address: 36035 Fulda, Germany
Phone: +49 661 6003-0
Fax: +49 661 6003-607
e-mail: mail@jumo.net
Internet: www.jumo.net

JUMO Instrument Co. Ltd.
JUMO House
Temple Bank, Riverway
Harlow, Essex CM20 2DY, UK
Phone: +44 1279 635533
Fax: +44 1279 635262
e-mail: sales@jumo.co.uk
Internet: www.jumo.co.uk

JUMO Process Control, Inc.
8 Technology Boulevard
Canastota, NY 13032, USA
Phone: 315-697-JUMO
1-800-554-JUMO
Fax: 315-697-5867
e-mail: info@jumo.us
Internet: www.jumo.us



JUMO STEAMtemp

Push-in resistance thermometers in steam-tight version

- for temperatures from -70 to +200°C
- as single, twin or triple resistance thermometer
- in 2-wire, 3-wire or 4-wire circuit
- connecting cable in PTFE, FEP and silicone

Push-in resistance thermometers are preferably used for temperature measurement in sterilizers. Thanks to their special construction, they are highly suitable for application in pressurized atmospheres containing steam. Other applications include plant engineering and laboratories.

The PTFE connecting cable is suitable for use in humid areas within the temperature range -190 to +260°C, the FEP cable from -70 to +200°C. The cable connection incorporates strain relief.

The measuring insert is normally fitted with a Pt100 temperature sensor to EN 60 751, Class A in 2-wire circuit. Versions with 2 or 3 measuring circuits are also available. 3- and 4-wire circuit connections can be provided.



Technical data

Connection

Connecting cable

Protection tube

Measuring insert

Protection

cable ends available as: bare wires, with ferrules, receptacles or multipole connector.

PTFE, ambient temperature -190 to +260°C

FEP, ambient temperature -70 to +200°C

silicone, ambient temperature -50 to +150°C

connecting cable available with shielding (option)

stainless steel 1.4571, 4mm, 4.5mm, 6mm dia.

Pt100 temperature sensor, EN 60 751, Cl. A, 2-/3-/4-wire circuit

IP69

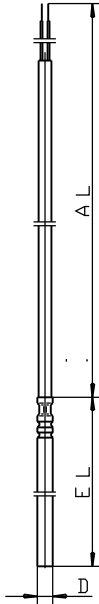
JUMO GmbH & Co. KG
Delivery address: Mackenrodtstraße 14,
36039 Fulda, Germany
Postal address: 36035 Fulda, Germany
Phone: +49 661 6003-0
Fax: +49 661 6003-607
e-mail: mail@jumo.net
Internet: www.jumo.net

JUMO Instrument Co. Ltd.
JUMO House
Temple Bank, Riverway
Harlow, Essex CM20 2DY, UK
Phone: +44 1279 635533
Fax: +44 1279 635262
e-mail: sales@jumo.co.uk
Internet: www.jumo.co.uk

JUMO Process Control, Inc.
8 Technology Boulevard
Canastota, NY 13032, USA
Phone: 315-697-JUMO
1-800-554-JUMO
Fax: 315-697-5867
e-mail: info@jumo.us
Internet: www.jumo.us



Dimensions



Type 902830/10
Type 902830/30

JUMO GmbH & Co. KG
 Delivery address: Mackenrodtstraße 14,
 36039 Fulda, Germany
 Postal address: 36035 Fulda, Germany
 Phone: +49 661 6003-0
 Fax: +49 661 6003-607
 e-mail: mail@jumo.net
 Internet: www.jumo.net

JUMO Instrument Co. Ltd.
 JUMO House
 Temple Bank, Riverway
 Harlow, Essex CM20 2DY, UK
 Phone: +44 1279 635533
 Fax: +44 1279 635262
 e-mail: sales@jumo.co.uk
 Internet: www.jumo.co.uk

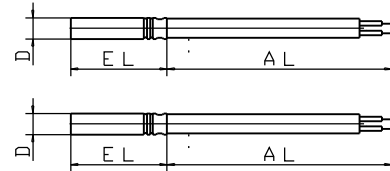
JUMO Process Control, Inc.
 8 Technology Boulevard
 Canastota, NY 13032, USA
 Phone: 315-697-JUMO
 1-800-554-JUMO
 Fax: 315-697-5867
 e-mail: info@jumo.us
 Internet: www.jumo.us



Order details: Push-in resistance thermometers in steam-tight version

(1) Basic version

	902830/10	Push-in resistance thermometer, steam-tight
	902830/30	Push-in resistance thermometer, steam-tight, pressure-tight up to 5.0bar
	(2) Operating temperature in °C	
x	302	-70 to +200°C / FEP connecting cable
x	370	-50 to +150°C / PTFE connecting cable
x	371	-50 to +150°C / silicone connecting cable
	(3) Measuring insert	
x	1001	1 x Pt100 in 3-wire circuit
x	1003	1 x Pt100 in 2-wire circuit
x	1011	1 x Pt100 in 4-wire circuit
x	2001	2 x Pt100 in 3-wire circuit
x	2003	2 x Pt100 in 2-wire circuit
x	2011	2 x Pt100 in 4-wire circuit (not in conjunction with 371)
x	3028	3 x Pt100 1 x 2-wire circuit, 2 x 3-wire circuit (not in conjunction with 371)
	(4) Tolerance class to EN 60 751	
x	2	Class A
	(5) Protection tube diameter D in mm	
x	4	4mm
x	4.5	4.5mm with 2 measuring circuits in 4-wire circuit
x	6	6mm
	(6) Fitting length EL in mm (50 ≤ EL ≤ 500)	
x	50	50mm
x	100	100mm
x	150	150mm
x	200	200mm
x	...	please specify in plain text (in 50mm steps)
	(7) Connecting cable end	
x	03	bare cable ends
x	11	ferrules to DIN 46 228 Part 4 (standard)
x	13	receptacle 6.3 to DIN 46 247
x	80	multipole connector (specify type in plain text)
	(8) Connecting cable length AL in mm (500 ≤ AL ≤ 500000)	
x	2500	2500mm (standard)
x	...	please specify in plain text (in 500mm steps)
	(9) Extra codes	
x	000	no extra code
x	304	without protection tube (sensor enclosed in PTFE sleeve)
x	312	curved protection tube R 13mm (only 4.5mm dia. on Type 902830/30) (please specify dimensions in plain text)
x	317	shielded connecting cable



Order code (1) - (2) - (3) - (4) - (5) - (6) - (7) - (8) / (9)
Order example 902830/10 - 370 - 1011 - 2 - 6 - 100 - 11 - 2500 / 000¹

1. List extra codes in sequence, separated by commas.

Stock versions

(1)	(2)	(3)	(4)	(5)	(6)	(7)	(8)	(9)	Sales No.
902830/10	- 370	- 1011	- 2	- 6	- 100	- 11	- 2500	/ 317	90/00306448
902830/10	- 370	- 2001	- 2	- 6	- 100	- 11	- 2500	/ 000	90/00306449
902830/30	- 302	- 1011	- 2	- 4	- 50	- 11	- 2500	/ 000	90/00445084
902830/30	- 302	- 2011	- 2	- 4.5	- 50	- 11	- 2500	/ 000	90/00445085