

JUMO GmbH & Co. KG
 Delivery address: Mackenrodtstraße 14
 36039 Fulda, Germany
 Postal address: 36035 Fulda, Germany
 Phone: +49 661 6003-0
 Fax: +49 661 6003-607
 Email: mail@jumo.net
 Internet: www.jumo.net

JUMO Instrument Co. Ltd.
 JUMO House
 Temple Bank, Riverway
 Harlow, Essex, CM20 2DY, UK
 Phone: +44 1279 63 55 33
 Fax: +44 1279 62 50 29
 Email: sales@jumo.co.uk
 Internet: www.jumo.co.uk

JUMO Process Control, Inc.
 6733 Myers Road
 East Syracuse, NY 13057, USA
 Phone: +1 315 437 5866
 Fax: +1 315 437 5860
 Email: info.us@jumo.net
 Internet: www.jumousa.com



JUMO HEATtemp

Push-in RTD Temperature Probe for Combined Cold/Heat Meter with Terminal Head for Thermowells (Type PL)

- For temperatures from 0 to 120 °C (cold) and 0 to 180 °C (heat)
- Type examination certificate for cold and combined cold/heat meters
- Fulfills the requirements of DIN EN 1434, AGFW FW 202, and FW 211
- Pairing and declaration of conformity according to German Weights and Measures Act and according to MID
- Production certified according to module D (MID) (CE and metrology identification marking)
- Coordinated accessories for installation (data sheet 902440 and 902442)

Combined cold/heat meter RTD temperature probes are used for temperature measurement in closed pipeline systems. Due to the installation in thermowells with fitting tolerance, the system no longer needs to be emptied during regular replacement once the certification period has elapsed.

The temperature probes are approved according to the EU directive 2014/32/EU (MID) as well as according to the German Weights and Measures Act (domestic approval).

The implementation of the requirements of the European directive 2014/32/EU (MID) and the German Weights and Measures Act (MessEG) ensures that our temperature probe pairs can be used as a sub-assembly for combined cold/heat meters when operated in line with their intended use.

As the manufacturer, we declare the conformity of these temperature probe pairs where necessary.



Technical data

Terminal head	Form B, aluminum die-cast, M24 × 1.5, IP65, ambient temperature -20 to +100 °C
Process connection	Push-in RTD temperature probe for thermowells
Protection tube	Stainless steel, Ø 6 mm with fitting tolerance for thermowell
Measuring insert	Platinum temperature sensor according to DIN EN 60751 Nominal value: Pt100, Pt500, Pt1000 Connection: two-wire or four-wire circuit
Temperature	0 to 120 °C (cold) 0 to 180 °C (heat)
Temperature difference	3 to 120 K (cold) 3 to 180 K (heat)
Minimum immersion depth	25 mm
Insertion length	85 to 400 mm
Maximum pressure	40 bar (with thermowell)
Flow velocity	2 m/s (water)
Response	$t_{0,5} \leq 12$ s (direct mounting)
Thermoelectric voltage	≤ 5 μ V
Environmental influences	Climatic 5 to 55 °C Protection type IP65 Mechanical M3



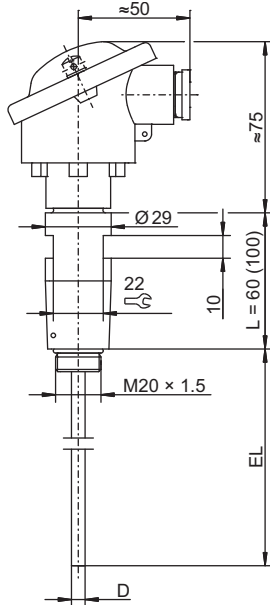
JUMO GmbH & Co. KG
 Delivery address: Mackenrodtstraße 14
 36039 Fulda, Germany
 Postal address: 36035 Fulda, Germany
 Phone: +49 661 6003-0
 Fax: +49 661 6003-607
 Email: mail@jumo.net
 Internet: www.jumo.net

JUMO Instrument Co. Ltd.
 JUMO House
 Temple Bank, Riverway
 Harlow, Essex, CM20 2DY, UK
 Phone: +44 1279 63 55 33
 Fax: +44 1279 62 50 29
 Email: sales@jumo.co.uk
 Internet: www.jumo.co.uk

JUMO Process Control, Inc.
 6733 Myers Road
 East Syracuse, NY 13057, USA
 Phone: +1 315 437 5866
 Fax: +1 315 437 5860
 Email: info.us@jumo.net
 Internet: www.jumousa.com



Dimensions



Basic type 902464/10 (PL)

Overview of approvals

Basic type	Type examination certificate	
	Type	Number
902464/10	Domestic (Germany; cold)	DE-15-M-PTB-0051

JUMO GmbH & Co. KG
 Delivery address: Mackenrodtstraße 14
 36039 Fulda, Germany
 Postal address: 36035 Fulda, Germany
 Phone: +49 661 6003-0
 Fax: +49 661 6003-607
 Email: mail@jumo.net
 Internet: www.jumo.net

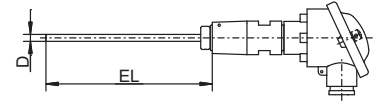
JUMO Instrument Co. Ltd.
 JUMO House
 Temple Bank, Riverway
 Harlow, Essex, CM20 2DY, UK
 Phone: +44 1279 63 55 33
 Fax: +44 1279 62 50 29
 Email: sales@jumo.co.uk
 Internet: www.jumo.co.uk

JUMO Process Control, Inc.
 6733 Myers Road
 East Syracuse, NY 13057, USA
 Phone: +1 315 437 5866
 Fax: +1 315 437 5860
 Email: info.us@jumo.net
 Internet: www.jumousa.com



Order details: Combined cold/heat meter RTD temperature probe with terminal head

(1) Basic type	
902464/10	Push-in RTD temperature probe with terminal head form B (standard) and continuous protection tube, design type PL
(2) Operating temperature in °C	
x 818	0 to 120 °C
x 830	0 to 180 °C
(3) Measuring insert	
x 1003	1 × Pt100 in two-wire circuit
x 1004	1 × Pt500 in two-wire circuit
x 1005	1 × Pt1000 in two-wire circuit
x 1011	1 × Pt100 in four-wire circuit
x 1012	1 × Pt500 in four-wire circuit
x 1013	1 × Pt1000 in four-wire circuit
(4) Tolerance class according to DIN EN 60751	
x 1	Class B (standard)
x 2	Class A
x 3	Class AA
(5) Protection tube diameter D in mm	
x 6	Ø 6 mm (tolerance according to DIN EN 1434-2)
(6) Insertion length EL in mm (85 to 400 mm)	
x 105	105 mm
x 140	140 mm
x 230	230 mm
x 400	400 mm
x ...	Specifications in plain text
(7) Extra codes	
x 000	None
x 340	Paired according to DIN EN 1434 ^a
x 341	Paired according to DIN EN 1434 with conformity assessment/identification marking according to MessEG ^a (cold, Germany)
x 761	Paired according to DIN EN 1434 with conformity assessment/identification marking according to MID ^a (heat)



^a Price for pairing depends on number of units; cost effective from 30 pairs of temperature probes

Order code (1) (2) (3) (4) (5) (6) (7) ...^a
 Order example 902464/10 - 818 - 1003 - 1 - 6 - 105 / 341,761

^a List extra codes in sequence and separate using commas.

Important information:
 Thermowells, data sheet 902440
 Terminal heads, data sheet 909715