

JUMO GmbH & Co. KG
 Delivery address: Mackenrodtstraße 14
 36039 Fulda, Germany
 Postal address: 36035 Fulda, Germany
 Phone: +49 661 6003-0
 Fax: +49 661 6003-607
 Email: mail@jumo.net
 Internet: www.jumo.net

JUMO Instrument Co. Ltd.
 JUMO House
 Temple Bank, Riverway
 Harlow, Essex, CM20 2DY, UK
 Phone: +44 1279 63 55 33
 Fax: +44 1279 62 50 29
 Email: sales@jumo.co.uk
 Internet: www.jumo.co.uk

JUMO Process Control, Inc.
 6733 Myers Road
 East Syracuse, NY 13057, USA
 Phone: +1 315 437 5866
 Fax: +1 315 437 5860
 Email: info.us@jumo.net
 Internet: www.jumousa.com



JUMO HEATtemp

Screw-in RTD Temperature Probe for Combined Cold/Heat Meters with Terminal Head for Direct Mounting (Type DL)

- For temperatures from 0 to 120 °C (cold) and 0 to 180 °C (heat)
- Type examination certificate for heat meters; MID and domestic approval for combined cold/heat meters as replaceable temperature probes
- Fulfills the requirements of DIN EN 1434, AGFW FW 202, and FW 211
- Pairing and declaration of conformity according to German Weights and Measures Act and MID
- Production certified according to module D (MID) (CE and metrology identification marking)

Combined cold/heat meter RTD temperature probes are used for temperature measurement in closed pipeline systems. Direct mounting without an additional immersion sleeve is recommended to achieve optimum thermal coupling to the measurement medium in the heating system. The temperature probes are approved according to the EU Directive 2014/32/EU (MID) as well as according to the German Weights and Measures Act (Mess- und Eichgesetz or MessEG). The implementation of the requirements of the European Directive 2014/32/EU (MID) and the German Weights and Measures Act (MessEG) ensures that our temperature probe pairs can be deployed as a sub-assembly for cold and heat meters when operated in line with their intended use.

The temperature probes are also available in paired and conformity-assessed versions. The officially recognized test facility for heat KHE2 is available for this purpose. Production has been certified according to Annex D of Directive 2014/32/EU and Annex 4 Module D of the German Weights and Measures Act.



Technical data

Terminal head	Form B, aluminium die-cast, M24 × 1.5, IP65, ambient temperature -20 to +100 °C
Process connection	Thread G 1/2, stainless steel
Protection tube	Stainless steel, Ø 6 mm or Ø 8 mm stepped down to Ø 6 mm
Measuring insert	Platinum temperature sensor according to DIN EN 60751 Nominal value: Pt100, Pt500, or Pt1000 Connection: two-wire or four-wire circuit
Temperature	0 to 120 °C (cold) 0 to 180 °C (heat)
Temperature difference	3 to 120 K (cold) 3 to 180 K (heat)
Minimum immersion depth	25 mm
Insertion length	85 to 280 mm
Maximum pressure	PS 25
Flow velocity	2 m/s (water)
Response	$t_{0.5} \leq 5$ s
Thermoelectric voltage	≤ 5 µV
Environmental influences	Climatic 5 to 55 °C Protection type IP65 Mechanical M3



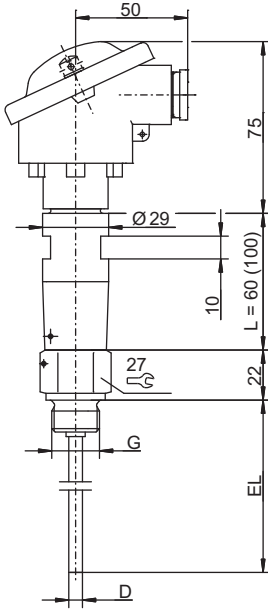
JUMO GmbH & Co. KG
 Delivery address: Mackenrodtstraße 14
 36039 Fulda, Germany
 Postal address: 36035 Fulda, Germany
 Phone: +49 661 6003-0
 Fax: +49 661 6003-607
 Email: mail@jumo.net
 Internet: www.jumo.net

JUMO Instrument Co. Ltd.
 JUMO House
 Temple Bank, Riverway
 Harlow, Essex, CM20 2DY, UK
 Phone: +44 1279 63 55 33
 Fax: +44 1279 62 50 29
 Email: sales@jumo.co.uk
 Internet: www.jumo.co.uk

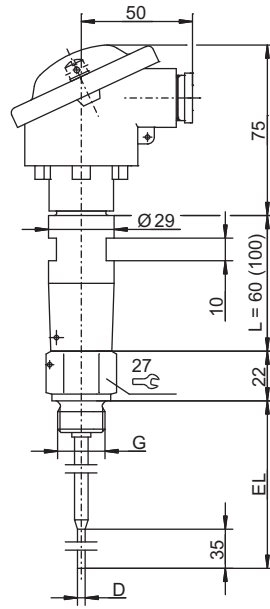
JUMO Process Control, Inc.
 6733 Myers Road
 East Syracuse, NY 13057, USA
 Phone: +1 315 437 5866
 Fax: +1 315 437 5860
 Email: info.us@jumo.net
 Internet: www.jumousa.com



Dimensions



Basic type 902454/10 (DL)



Basic type 902454/11 (DL)

JUMO GmbH & Co. KG
 Delivery address: Mackenrodtstraße 14
 36039 Fulda, Germany
 Postal address: 36035 Fulda, Germany
 Phone: +49 661 6003-0
 Fax: +49 661 6003-607
 Email: mail@jumo.net
 Internet: www.jumo.net

JUMO Instrument Co. Ltd.
 JUMO House
 Temple Bank, Riverway
 Harlow, Essex, CM20 2DY, UK
 Phone: +44 1279 63 55 33
 Fax: +44 1279 62 50 29
 Email: sales@jumo.co.uk
 Internet: www.jumo.co.uk

JUMO Process Control, Inc.
 6733 Myers Road
 East Syracuse, NY 13057, USA
 Phone: +1 315 437 5866
 Fax: +1 315 437 5860
 Email: info.us@jumo.net
 Internet: www.jumousa.com



Overview of approvals

Basic type	Type examination certificate	
	Type	Number
902454/10 (DL) 902454/11 (DL) DL = Direct long (long temperature probe, without immersion sleeve)	Weights and Measures Act (Germany, cold)	DE-15-M-PTB-0051

JUMO GmbH & Co. KG
 Delivery address: Mackenrodtstraße 14
 36039 Fulda, Germany
 Postal address: 36035 Fulda, Germany
 Phone: +49 661 6003-0
 Fax: +49 661 6003-607
 Email: mail@jumo.net
 Internet: www.jumo.net

JUMO Instrument Co. Ltd.
 JUMO House
 Temple Bank, Riverway
 Harlow, Essex, CM20 2DY, UK
 Phone: +44 1279 63 55 33
 Fax: +44 1279 62 50 29
 Email: sales@jumo.co.uk
 Internet: www.jumo.co.uk

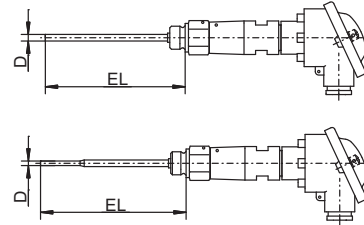
JUMO Process Control, Inc.
 6733 Myers Road
 East Syracuse, NY 13057, USA
 Phone: +1 315 437 5866
 Fax: +1 315 437 5860
 Email: info.us@jumo.net
 Internet: www.jumousa.com



Order details: Combined cold/heat meter RTD temperature probe with terminal head

(1) Basic type

902454/10	Screw-in RTD temperature probe with terminal head form B (standard) and continuous protection tube, design type DL
902454/11	Screw-in RTD temperature probe with terminal head form B (standard) and stepped protection tube, design type DL



(2) Operating temperature in °C

x x 818 0 to 120 °C

(3) Measuring insert

x x 1003 1 × Pt100 in two-wire circuit
 x x 1004 1 × Pt500 in two-wire circuit
 x x 1005 1 × Pt1000 in two-wire circuit
 x x 1011 1 × Pt100 in four-wire circuit
 x x 1012 1 × Pt500 in four-wire circuit
 x x 1013 1 × Pt1000 in four-wire circuit

(4) Tolerance class according to DIN EN 60751

x x 1 Class B (standard)
 x x 2 Class A
 x x 3 Class AA

(5) Protection tube diameter D in mm

x 6 Ø 6 mm (standard)
 x 8 Ø 8 mm stepped down to Ø 6 mm

(6) Insertion length EL in mm (85 to 400 mm)

x x 85 85 mm
 x x 120 120 mm
 x x 155 155 mm
 x x 210 210 mm
 x x ... Specifications in plain text

(7) Process connection

x x 104 Screw connection G 1/2
 x x ... Specifications in plain text

(8) Extra codes

x x 000 None
 x x 340 Paired according to DIN EN 1434^a
 x x 341 Paired according to DIN EN 1434 with conformity assessment/identification marking according to MessEG^a (cold, Germany)
 x x 761 Paired according to DIN EN 1434 with conformity assessment/identification marking according to MID^a (heat)

^a Price for pairing depends on number of units; cost effective from 30 pairs of temperature probes

Order code (1) (2) (3) (4) (5) (6) (7) (8)
 [] - [] - [] - [] - [] - [] - [] / [] , ...^a
Order example 902454/10 - 818 - 1003 - 1 - 6 - 85 - 104 / 341,761

^a List extra codes in sequence and separate using commas.

Note:
 Terminal heads, data sheet 909715
 Accessories, data sheet 902442