

**JUMO GmbH & Co. KG**

Delivery address: Mackenrodtstraße 14,  
36039 Fulda, Germany  
Postal address: 36035 Fulda, Germany  
Phone: +49 661 6003-0  
Fax: +49 661 6003-607  
E-mail: mail@jumo.net  
Internet: www.jumo.net

**JUMO Instrument Co. Ltd.**

JUMO House  
Temple Bank, Riverway  
Harlow - Essex CM20 2DY, UK  
Phone: +44 1279 63 55 33  
Fax: +44 1279 63 52 62  
E-mail: sales@jumo.co.uk  
Internet: www.jumo.co.uk

**JUMO Process Control, Inc.**

8 Technology Boulevard  
Canastota, NY 13032, USA  
Phone: 315-697-JUMO  
1-800-554-JUMO  
Fax: 315-697-5867  
E-mail: info@jumo.us  
Internet: www.jumo.us



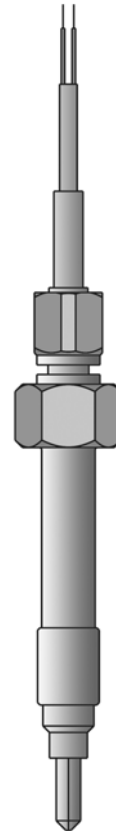
## Screw-in melt RTD temperature probes

- Temperature range from -50 to +400°C
- Various probe tips available
- Stainless steel thermowell and probe tip
- Ceramic insulated probe tip
- In 2-wire, 3-wire or 4-wire-circuit
- For application in the plastics processing industry

Screw-in melt RTD temperature probes are preferably used for temperature measurement to record the melt temperature in the plastics processing industry.

Blade shaped or plane probe tips ensure optimum temperature recording depending on the requirements. Depending on their version, the connection lines are suitable for a temperature range of -50 to +400°C.

The measuring insert is equipped with a Pt 100 temperature probe as per DIN EN 60 751, class B in 2-wire-circuit. Connection is also available in 3-wire or 4-wire-circuit as an option.



## Technical Data

<b>Connection</b>	Stripped wire ends, with ferrules, also available with multi-pole connector, Connector, 2/4-pin, IP50
<b>Cable</b>	PTFE, ambient temperature -190 to +260°C PTFE metal braiding, ambient temperature -50 to +260°C metal braiding, ambient temperature -50 to +400°C
<b>Process connection</b>	thread, stainless steel 1.4571
<b>Thermowell</b>	stainless steel 1.4571
<b>Measuring insert</b>	Pt-100 temperature sensor, DIN EN 60 751, Class B, two-wire circuit
<b>Accessories</b>	Mating connector 2/4-pin, size II, data sheet 90.9726, Pos. 5

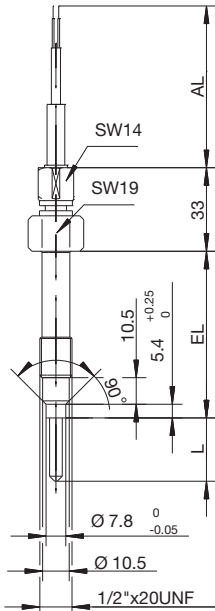
**JUMO GmbH & Co. KG**  
 Delivery address: Mackenrodtstraße 14,  
 36039 Fulda, Germany  
 Postal address: 36035 Fulda, Germany  
 Phone: +49 661 6003-0  
 Fax: +49 661 6003-607  
 E-mail: mail@jumo.net  
 Internet: www.jumo.net

**JUMO Instrument Co. Ltd.**  
 JUMO House  
 Temple Bank, Riverway  
 Harlow - Essex CM20 2DY, UK  
 Phone: +44 1279 63 55 33  
 Fax: +44 1279 63 52 62  
 E-mail: sales@jumo.co.uk  
 Internet: www.jumo.co.uk

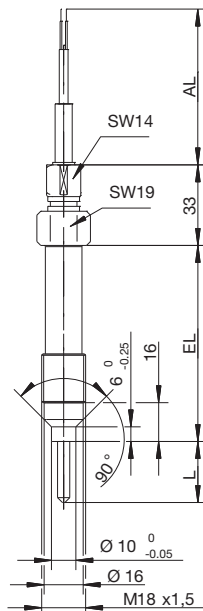
**JUMO Process Control, Inc.**  
 8 Technology Boulevard  
 Canastota, NY 13032, USA  
 Phone: 315-697-JUMO  
 1-800-554-JUMO  
 Fax: 315-697-5867  
 E-mail: info@jumo.us  
 Internet: www.jumo.us



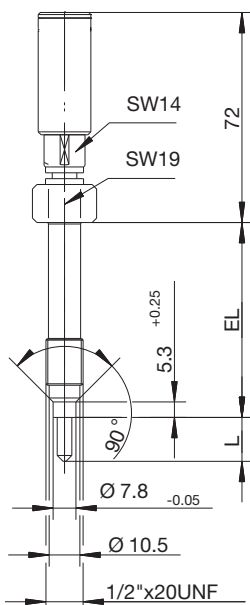
## Dimensions



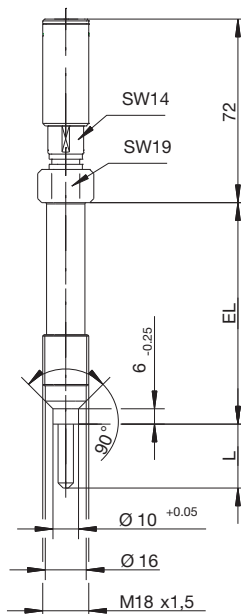
Type 902090/10 ...  
 1/2"x20 UNF



Type 902090/10 ...  
 M 18x1.5



Type 902090/20 ...  
 1/2"x20 UNF



Type 902090/20 ...  
 M 18x1.5

**JUMO GmbH & Co. KG**

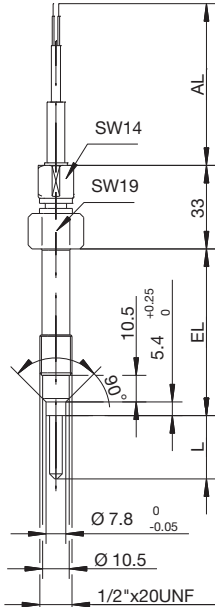
Delivery address: Mackenrodtstraße 14,  
36039 Fulda, Germany  
Postal address: 36035 Fulda, Germany  
Phone: +49 661 6003-0  
Fax: +49 661 6003-607  
E-mail: mail@jumo.net  
Internet: www.jumo.net

**JUMO Instrument Co. Ltd.**

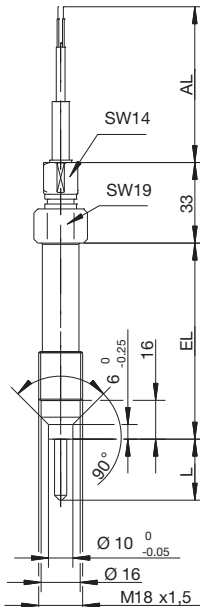
JUMO House  
Temple Bank, Riverway  
Harlow - Essex CM20 2DY, UK  
Phone: +44 1279 63 55 33  
Fax: +44 1279 63 52 62  
E-mail: sales@jumo.co.uk  
Internet: www.jumo.co.uk

**JUMO Process Control, Inc.**

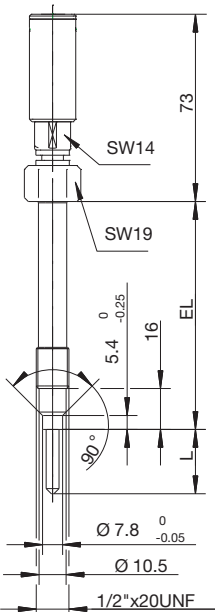
8 Technology Boulevard  
Canastota, NY 13032, USA  
Phone: 315-697-JUMO  
1-800-554-JUMO  
Fax: 315-697-5867  
E-mail: info@jumo.us  
Internet: www.jumo.us



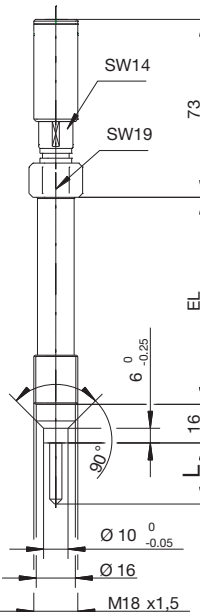
Type 902090/50 ...  
1/2"x20 UNF



Type 902090/50 ...  
M 18x1.5



Type 902090/60 ...  
1/2"x20 UNF



Type 902090/60 ...  
M 18x1.5

**JUMO GmbH & Co. KG**  
 Delivery address: Mackenrodtstraße 14,  
 36039 Fulda, Germany  
 Postal address: 36035 Fulda, Germany  
 Phone: +49 661 6003-0  
 Fax: +49 661 6003-607  
 E-mail: mail@jumo.net  
 Internet: www.jumo.net

**JUMO Instrument Co. Ltd.**  
 JUMO House  
 Temple Bank, Riverway  
 Harlow - Essex CM20 2DY, UK  
 Phone: +44 1279 63 55 33  
 Fax: +44 1279 63 52 62  
 E-mail: sales@jumo.co.uk  
 Internet: www.jumo.co.uk

**JUMO Process Control, Inc.**  
 8 Technology Boulevard  
 Canastota, NY 13032, USA  
 Phone: 315-697-JUMO  
 1-800-554-JUMO  
 Fax: 315-697-5867  
 E-mail: info@jumo.us  
 Internet: www.jumo.us



**Order details: Screw-in melt RTD temperature probes**

**(1) Basic type**

902090/10	Screw-in melt RTD temperature probes with connection cable	
902090/20	Screw-in melt RTD temperature probes with plug connector (LEMO device outlet ERA-2S)	
902090/50	Screw-in melt RTD temperature probes with connection cable and ceramic insulated probe tip	
902090/60	Screw-in melt RTD temperature probes with plug connector (LEMO device outlet ERA-2S) and ceramic insulated probe tip	

**(2) Operating temperature range in °C/cable type**

x x x x	386	-50 to +260°C/PTFE
x x x x	388	-50 to +260°C/PTFE metal braiding
x x x x	402	-50 to +400°C/Metal braiding

**(3) Measuring insert**

x x x x	1001	1x Pt 100 in 3-wire-circuit
x x x x	1003	1x Pt 100 in 2-wire circuit
x x x x	1011	1x Pt 100 in 4-wire circuit
x	2001	2x Pt 100 in 3-wire-circuit
x x	2003	2x Pt 100 in 2-wire circuit

**(4) Tolerance class according to DIN EN 60751**

x x x x	1	Class B (standard)
x x x x	2	Class A

**(5) Fitting length EL in mm**

x x x x	152	152mm (Standard)
x x x x	...	Specifications in plain text

**(6) Probe tip shape**

x x	1	Flat
x x x x	4	Blade

**(7) Probe tip length L in mm**

x x	0	Flat
x x x x	5	5mm
x x x x	10	10mm
x x x x	15	15mm
x x x x	20	20mm
x x x x	25	25mm

**(8) Material/surface of the probe tip**

x x x x	26	1.4571 (Standard)
x x x x	39	1.4571 coating as per agreement

**(9) Process connection**

x x x x	126	M 18x1.5
x x x x	153	1/2"x20 UNF

**(10) Cable termination**

x	x	00	None
x	x	03	stripped wires
x	x	11	Ferrules as per DIN 46 228 Part 4 (Standard)
x	x	80	Multi-pole connector (enter type in plain text)

**(11) Connection cable length AL in mm**

x	x	0000	None
x	x	3000	3000mm
x	x	...	Please specify in plain text (500mm steps)

**(12) Extra codes**

x x x x	000	None
x x	315	Anti-kink spring
x x	853	Metal protection hose on the connection line

**Order code**      (1) - (2) - (3) - (4) - (5) - (6) - (7) - (8) - (9) - (10) - (11) - (12) / ...<sup>1</sup>  
**Order example**      902090/10 - 402 - 1003 - 1 - 152 - 4 - 15 - 26 - 153 - 11 - 3000 / 000

<sup>1</sup> List extra codes in sequence, separated by commas.

**JUMO GmbH & Co. KG**

Delivery address: Mackenrodtstraße 14,  
36039 Fulda, Germany  
Postal address: 36035 Fulda, Germany  
Phone: +49 661 6003-0  
Fax: +49 661 6003-607  
E-mail: mail@jumo.net  
Internet: www.jumo.net

**JUMO Instrument Co. Ltd.**

JUMO House  
Temple Bank, Riverway  
Harlow - Essex CM20 2DY, UK  
Phone: +44 1279 63 55 33  
Fax: +44 1279 63 52 62  
E-mail: sales@jumo.co.uk  
Internet: www.jumo.co.uk

**JUMO Process Control, Inc.**

8 Technology Boulevard  
Canastota, NY 13032, USA  
Phone: 315-697-JUMO  
1-800-554-JUMO  
Fax: 315-697-5867  
E-mail: info@jumo.us  
Internet: www.jumo.us

**Stock version**

(1)	(2)	(3)	(4)	(5)	(6)	(7)	(8)	(9)	(10)	(11)	(12)	Part No.
902090/10	- 402	- 1001	- 1	- 152	- 4	- 10	- 26	- 153	- 11	- 3000	/ 000	90/00515674