

JUMO GmbH & Co. KG
Delivery address: Mackenrodtstraße 14
36039 Fulda, Germany
Postal address: 36035 Fulda, Germany
Phone: +49 661 6003-0
Fax: +49 661 6003-607
Email: mail@jumo.net
Internet: www.jumo.net

JUMO Instrument Co. Ltd.
JUMO House
Temple Bank, Riverway
Harlow, Essex, CM20 2DY, UK
Phone: +44 1279 63 55 33
Fax: +44 1279 62 50 29
Email: sales@jumo.co.uk
Internet: www.jumo.co.uk

JUMO Process Control, Inc.
6733 Myers Road
East Syracuse, NY 13057, USA
Phone: +1 315 437 5866
Fax: +1 315 437 5860
Email: info.us@jumo.net
Internet: www.jumousa.com



JUMO PEKA

Hygienic process connection

Brief description

The process connection combines the measuring instrument (different physical measurement variables or electrolytic conductivity) with a process connection adapter that is suitable for the application. Starting with a system that eliminates dead zones and a design that allows for good cleaning, the adapter system is specially constructed for the requirements of hygienic processes.

The rigid connecting piece with the adapter, which is designed to rotate, protects the O-ring that is located flush with the front from damage resulting from assembly and also makes it possible to align the measuring instrument.

The modular adapter system provides a fast, easy way to replace the measuring instrument, for example for calibration.

Possible applications include:

- Food and beverage industry
- Pharmaceutical industry
- Biotechnology
- Peripheral processes (water and wastewater treatment)



Customer benefits

- **Process safety**
Hygienic design, parts in contacts with medium made of stainless steel. This and a system design that eliminates dead zones prevents microbial contamination, thereby ensuring the highest level of process safety.
- **Uncomplicated and time-saving**
The modular adapter system can be used for numerous measuring instruments and is available with a wide range of process connection adapters. The measuring instrument can be mounted and removed any number of times. Reduced time for assembly, cleaning, and repair processes keeps system downtimes and the costs associated with them to a minimum.
- **Flexible**
With the 360° rotating connection adapter, the measuring instrument can be aligned individually in a user-friendly manner to ensure optimum legibility and electrical installation in any mounting position.

JUMO GmbH & Co. KG
 Delivery address: Mackenrodtstraße 14
 36039 Fulda, Germany
 Postal address: 36035 Fulda, Germany
 Phone: +49 661 6003-0
 Fax: +49 661 6003-607
 Email: mail@jumo.net
 Internet: www.jumo.net

JUMO Instrument Co. Ltd.
 JUMO House
 Temple Bank, Riverway
 Harlow, Essex, CM20 2DY, UK
 Phone: +44 1279 63 55 33
 Fax: +44 1279 62 50 29
 Email: sales@jumo.co.uk
 Internet: www.jumo.co.uk

JUMO Process Control, Inc.
 6733 Myers Road
 East Syracuse, NY 13057, USA
 Phone: +1 315 437 5866
 Fax: +1 315 437 5860
 Email: info.us@jumo.net
 Internet: www.jumousa.com



Technical data

Mechanical features

Material	1.4435 (316 L)
Surface	Ra ≤ 0.8

System structure

Measuring instruments



Pressure



Temperature



Liquid analysis

Pressure transmitter

402050 JUMO dTRANS p31
 402060 JUMO Wtrans p
 403025 JUMO dTRANS p20
 404366 JUMO dTRANS p30
 404385 JUMO dTRANS p02
 405052 JUMO DELOS SI

Resistance thermometers

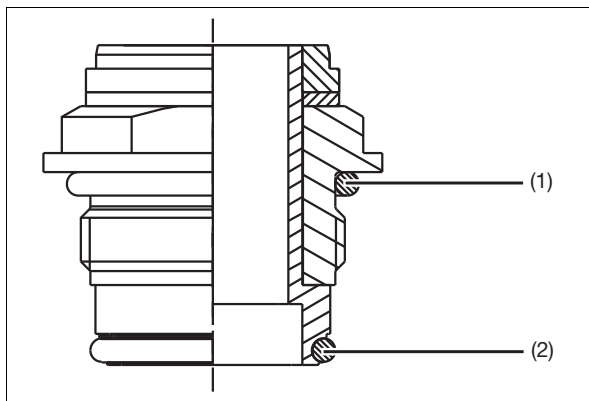
902810 Resistance thermometers
 902815 JUMO Dtrans T100
 902915 JUMO dTRANS T1000

Electrolytic conductivity

202924 JUMO tecLine CR
 202930 JUMO tecLine CR-4P

Process connection JUMO PEKA 997

(process connection in the data sheet of the relevant measuring instrument: 997)



- (1) Rear seal^a
- (2) Front flush seal^b

^a In conjunction with a measuring device the seal is included in delivery of process connection 997.

^b Please order seal matching to application. These is not included in the scope of delivery.

JUMO GmbH & Co. KG
 Delivery address: Mackenrodtstraße 14
 36039 Fulda, Germany
 Postal address: 36035 Fulda, Germany
 Phone: +49 661 6003-0
 Fax: +49 661 6003-607
 Email: mail@jumo.net
 Internet: www.jumo.net

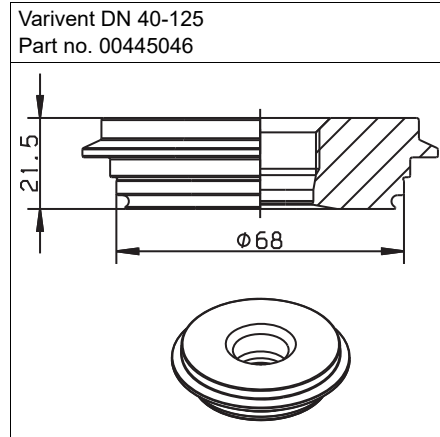
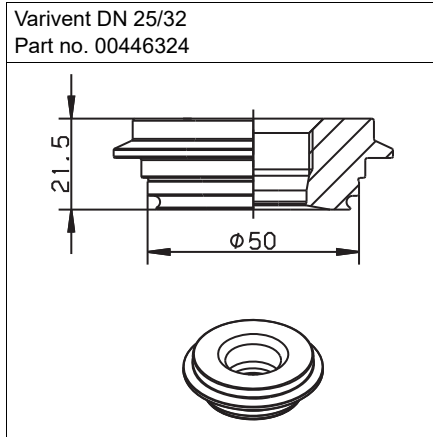
JUMO Instrument Co. Ltd.
 JUMO House
 Temple Bank, Riverway
 Harlow, Essex, CM20 2DY, UK
 Phone: +44 1279 63 55 33
 Fax: +44 1279 62 50 29
 Email: sales@jumo.co.uk
 Internet: www.jumo.co.uk

JUMO Process Control, Inc.
 6733 Myers Road
 East Syracuse, NY 13057, USA
 Phone: +1 315 437 5866
 Fax: +1 315 437 5860
 Email: info.us@jumo.net
 Internet: www.jumousa.com

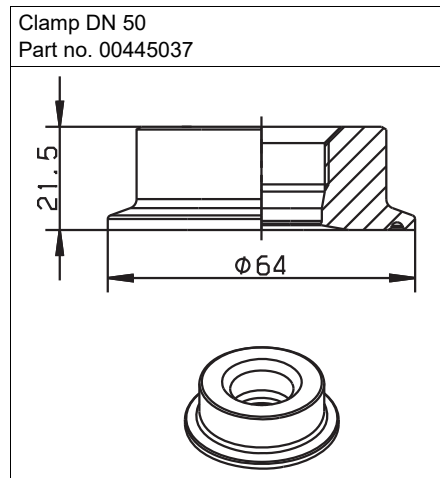
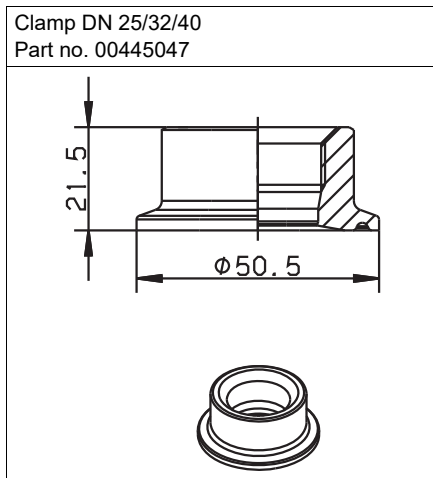


Process connection adapter (dimensions)

Varivent connection adapter



Clamp connection adapter



DN DIN 32676	DN (Zoll)	DN ISO 2852	Ø D ₁	Ø D ₂
25	1	20	43.5	50.5
32	1.5	25		
40		32		
50	2	40	56.5	64

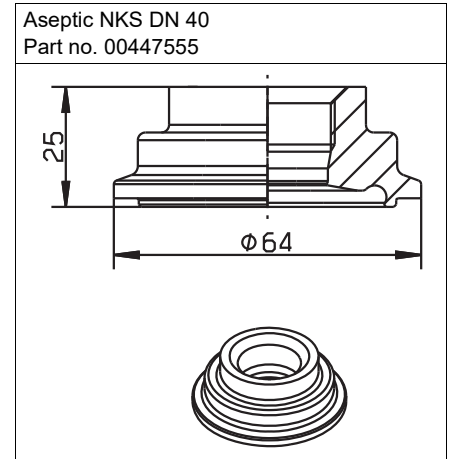
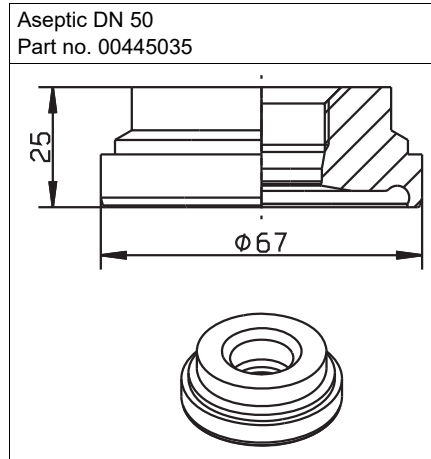
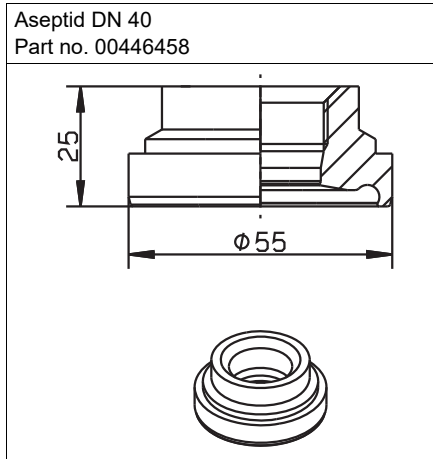
JUMO GmbH & Co. KG
 Delivery address: Mackenrodtstraße 14
 36039 Fulda, Germany
 Postal address: 36035 Fulda, Germany
 Phone: +49 661 6003-0
 Fax: +49 661 6003-607
 Email: mail@jumo.net
 Internet: www.jumo.net

JUMO Instrument Co. Ltd.
 JUMO House
 Temple Bank, Riverway
 Harlow, Essex, CM20 2DY, UK
 Phone: +44 1279 63 55 33
 Fax: +44 1279 62 50 29
 Email: sales@jumo.co.uk
 Internet: www.jumo.co.uk

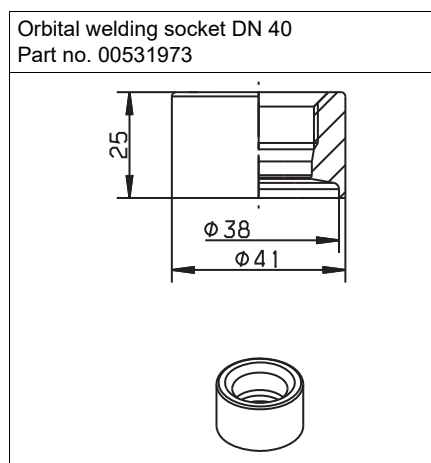
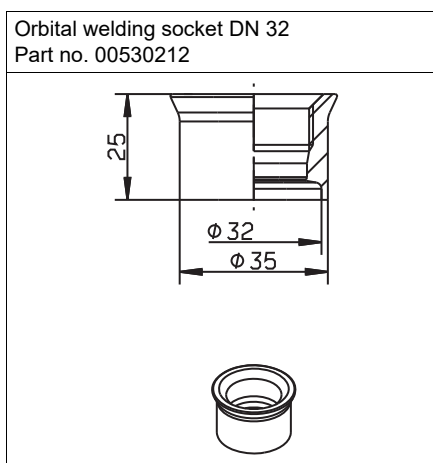
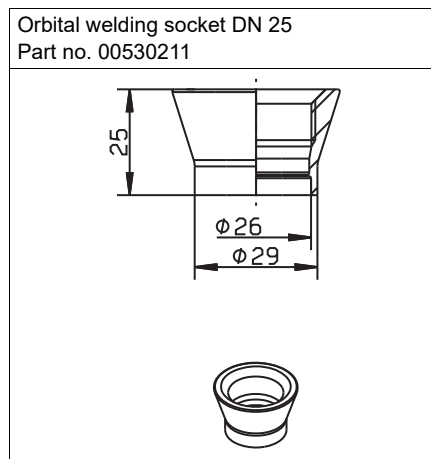
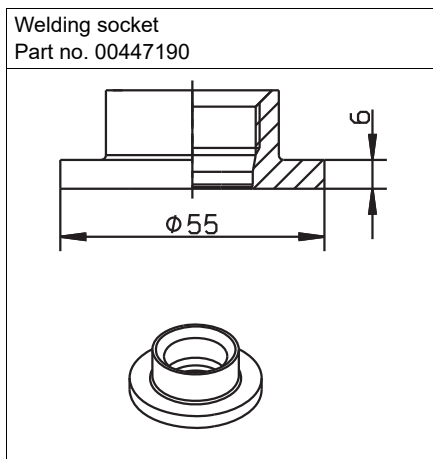
JUMO Process Control, Inc.
 6733 Myers Road
 East Syracuse, NY 13057, USA
 Phone: +1 315 437 5866
 Fax: +1 315 437 5860
 Email: info.us@jumo.net
 Internet: www.jumousa.com



Aseptic connection adapter



Welding sockets



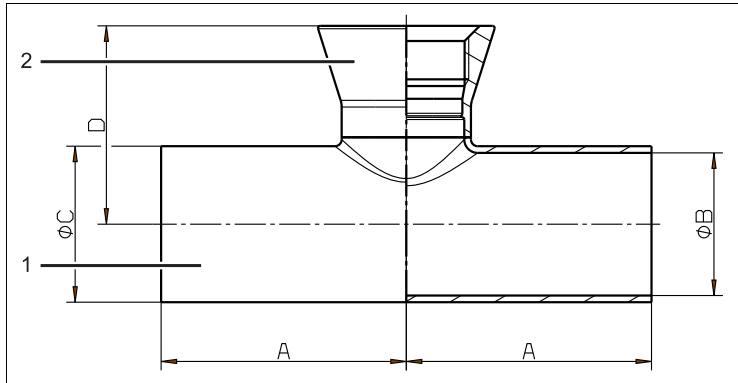
JUMO GmbH & Co. KG
 Delivery address: Mackenrodtstraße 14
 36039 Fulda, Germany
 Postal address: 36035 Fulda, Germany
 Phone: +49 661 6003-0
 Fax: +49 661 6003-607
 Email: mail@jumo.net
 Internet: www.jumo.net

JUMO Instrument Co. Ltd.
 JUMO House
 Temple Bank, Riverway
 Harlow, Essex, CM20 2DY, UK
 Phone: +44 1279 63 55 33
 Fax: +44 1279 62 50 29
 Email: sales@jumo.co.uk
 Internet: www.jumo.co.uk

JUMO Process Control, Inc.
 6733 Myers Road
 East Syracuse, NY 13057, USA
 Phone: +1 315 437 5866
 Fax: +1 315 437 5860
 Email: info.us@jumo.net
 Internet: www.jumousa.com



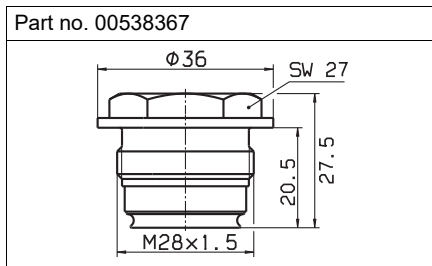
T-piece



- (1) T-piece with PEKA connection
- (2) Orbital welding socket DN 25

DN	A	B	C	D
25	50	26	29	41
32	55	32	35	44
40	60	38	41	47
50	70	50	53	53
65	80	66	70	62
80	90	81	85	70
100	100	100	104	80.5

Blind grommet



NOTE!

Please select the seal adapted to the application. This is not included in the scope of delivery.

JUMO GmbH & Co. KG
 Delivery address: Mackenrodtstraße 14
 36039 Fulda, Germany
 Postal address: 36035 Fulda, Germany
 Phone: +49 661 6003-0
 Fax: +49 661 6003-607
 Email: mail@jumo.net
 Internet: www.jumo.net

JUMO Instrument Co. Ltd.
 JUMO House
 Temple Bank, Riverway
 Harlow, Essex, CM20 2DY, UK
 Phone: +44 1279 63 55 33
 Fax: +44 1279 62 50 29
 Email: sales@jumo.co.uk
 Internet: www.jumo.co.uk

JUMO Process Control, Inc.
 6733 Myers Road
 East Syracuse, NY 13057, USA
 Phone: +1 315 437 5866
 Fax: +1 315 437 5860
 Email: info.us@jumo.net
 Internet: www.jumousa.com



Seal materials

Features	Seal materials		
	FKM Fluororubber	VMQ Vinyl-methyl-polysiloxane (silicone rubber)	EPDM Ethylen-propylene-diene rubber
Alkaline media	unsuitable	not advisable	very good
Peracetic acid < 1 %	good	not advisable	good
Peracetic acid 10 %	unsuitable	unsuitable	unsuitable
Caustic soda < 5 %	not advisable	satisfactory	very gut
Nitric acid < 5 %	good	not advisable	good
Hydrochloric acid < 5 %	good	not advisable	good
Ozone < 200 pphm	very good	very good	very good
Citrus juice	good	unsuitable	unsuitable
Polyglucose/Fat	good	good	good
Mineral oil/Fat	good	satisfactory	unsuitable
Silicone oil/Fat	good	unsuitable	very good
Water	satisfactory	good	very good
Steam	not advisable	not advisable	up to 150 °C
Milck products	good	good	satisfactory

Other than a seal's technical suitability it also has to fulfill a variety of additional properties that result from the general purity specifications, legislative measures, and health policy aspects.

The areas of application / stable properties that are listed in the table are only rough guidelines. They do not release users from having to conduct their own tests for evaluating operational capability.

Soldering guidelines

The soldering guidelines apply to all welding sleeves listed in data sheet 409711.

Welding the PEKA welding sleeves in tanks (figure 1) and pipes (figure 2)

- 1) Drill a hole with the same external diameter as the sleeve, observing a max. tolerance of +0,2 mm.
- 2) Position the welding sleeve and fasten it provisionally at four points.
- 3) Screw the welding aid in place.
- 4) It is advisable to divide the weld into several segments, in accordance with conventional welding practice. Weld the sections between opposite points to avoid deformation and sealing problems.
- 5) After welding two segments, pause the welding process until the weld has cooled.
- 6) Allow the welding sleeve to cool after welding and remove the welding aid.

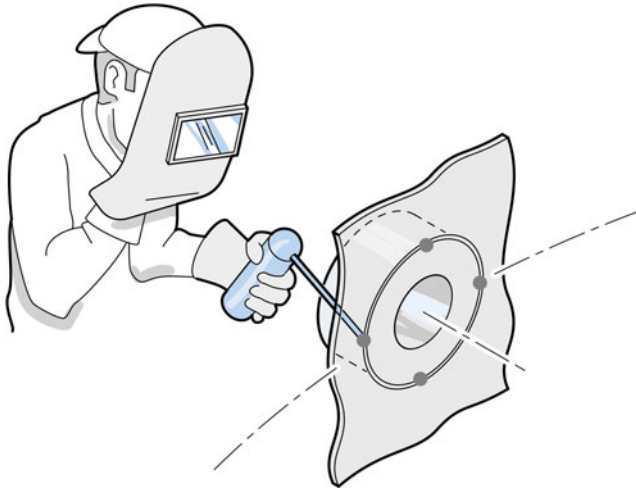


Figure 1: Welding in tanks

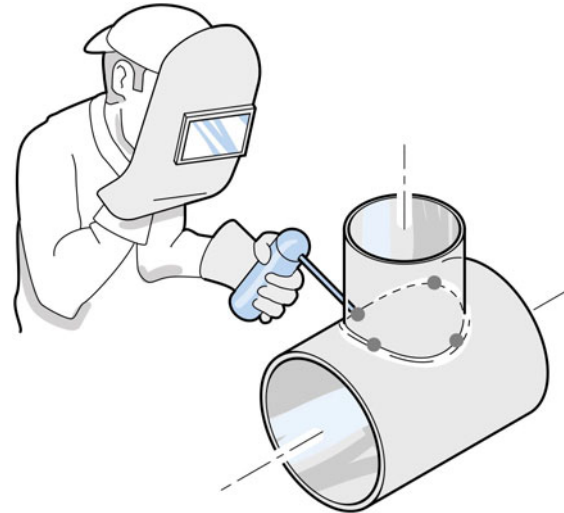
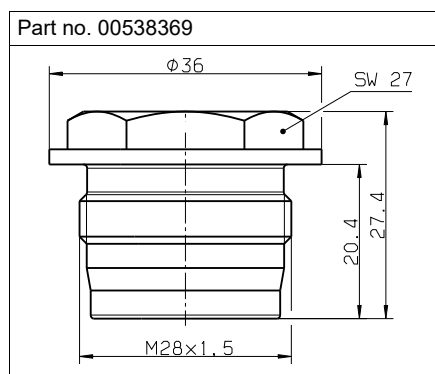


Figure 2: Welding in pipes

Import information!

To prevent the sleeve from melting or warping, the pauses between the individual sections should be timed to allow the sleeve to cool.

Welding dummy/welding aid



JUMO GmbH & Co. KG
 Delivery address: Mackenrodtstraße 14
 36039 Fulda, Germany
 Postal address: 36035 Fulda, Germany
 Phone: +49 661 6003-0
 Fax: +49 661 6003-607
 Email: mail@jumo.net
 Internet: www.jumo.net

JUMO Instrument Co. Ltd.
 JUMO House
 Temple Bank, Riverway
 Harlow, Essex, CM20 2DY, UK
 Phone: +44 1279 63 55 33
 Fax: +44 1279 62 50 29
 Email: sales@jumo.co.uk
 Internet: www.jumo.co.uk

JUMO Process Control, Inc.
 6733 Myers Road
 East Syracuse, NY 13057, USA
 Phone: +1 315 437 5866
 Fax: +1 315 437 5860
 Email: info.us@jumo.net
 Internet: www.jumousa.com



Order details

Varivent	
00445046	Varivent DN 40-125, material-no. 1.4435, 316 L
00446324	Varivent DN 32/25, material-no. 1.4404, 316 L
Clamp	
00445037	Clamp DN 50 according to DIN 32676, 2" ISO 2852, material-no. 1.4404, 316 L
00445047	Clamp DN 25/32/40 according to DIN 32676, material-no. 1.4404, 316 L
Aseptic	
00445035	DN 50 Aseptic according to DIN 11864-1A, material-no. 1.4404, 316 L
00446458	DN 40 Aseptic according to DIN 11864-1A, material-no. 1.4404, 316 L
Weld-in socket	
00447190	Weld-in socket Ø 55 mm, material-no. 1.4435, 316 L
00530211	Orbital weld-in socket DN 25, material-no. 1.4435, 316 L
00530212	Orbital weld-in socket DN 32, material-no. 1.4435, 316 L
00531973	Orbital weld-in socket DN 40, material-no. 1.4435, 316 L
00538367	Blind plug M28 × 1.5, JUMO PEKA
00538369	Welding dummy M28 × 1.5, JUMO PEKA
Flange	
	None
00579359	DRD flange DN 50
Front flush seal liegende Dichtung^a	
00446160	O-ring 21 × 2.5 VMQ, FDA konform
00446162	O-ring 21 × 2.5 EPDM, FDA konform
00446738	O-ring 21 × 2.5 FPM, FDA konform
Rear seal^b	
	None
00451344	O-ring 26 × 2.5 VMQ, FDA conform
T-piece	
00643555	T-piece with PEKA connection DN 25

^a Please order seal matching to application. These is not included in the scope of delivery.

^b In conjunction with a measuring device the seal is included in delivery of process connection 997.

All part numbers are optional available with inspection certificate 3.1 material.

Accessories

Notice regarding orders

Hygienic process connection 997 JUMO PEKA

NOTE!

Process connection 997 must be selected in the data sheet of the relevant measuring instrument!