

JUMO GmbH & Co. KG
 Delivery address: Mackenrodtstraße 14
 36039 Fulda, Germany
 Postal address: 36035 Fulda, Germany
 Phone: +49 661 6003-0
 Fax: +49 661 6003-607
 Email: mail@jumo.net
 Internet: www.jumo.net

JUMO UK LTD
 JUMO House
 Temple Bank, Riverway
 Harlow, Essex, CM20 2DY, UK
 Phone: +44 1279 63 55 33
 Fax: +44 1279 62 50 29
 Email: sales@jumo.co.uk
 Internet: www.jumo.co.uk

JUMO Process Control, Inc.
 6724 Joy Road
 East Syracuse, NY 13057, USA
 Phone: +1 315 437 5866
 Fax: +1 315 437 5860
 Email: info.us@jumo.net
 Internet: www.jumousa.com



JUMO Cloud

IoT Platform for Reliable Process Management

Description

The IoT platform for process visualization as well as data acquisition, evaluation, and archiving enables worldwide access to measurement data using common web browsers. The JUMO Cloud is characterized by a high degree of security as well as valuable visualization, alarm, and planning functions.



Global access

to your process information with individually configurable user rights and dashboards



High level of data security

due to certification, end-to-end encryption, and redundant infrastructure



Unlimited access

to the dashboards with any number of end devices via common web browsers without carrying out installation



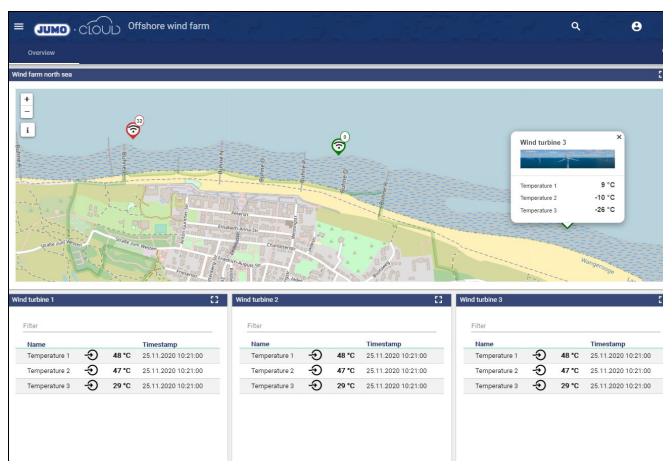
Reduced outlay

by JUMO storing the data, including backup, on your behalf

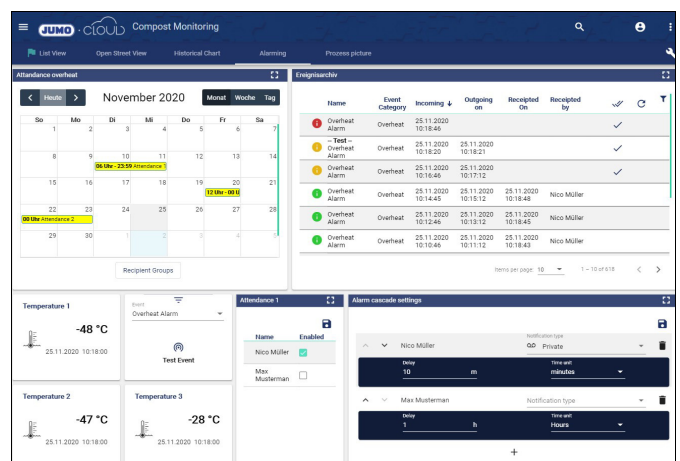


Alarm management

through data evaluation, availability planning, monitoring and remote alarm functions



Integration of maps



Availability planning and remote alarm

Data transport

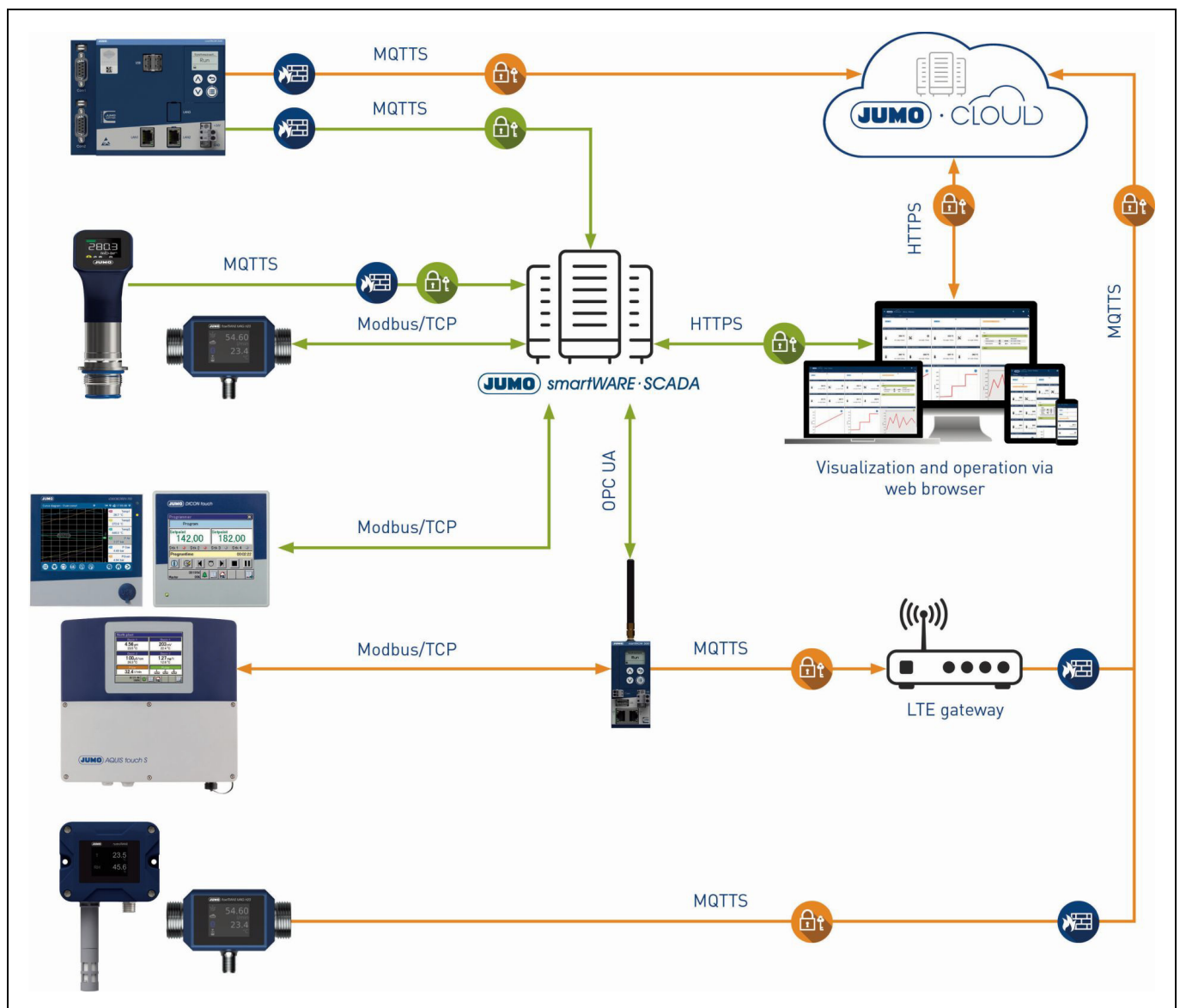
Different process value signals can be processed in the JUMO Cloud. A **signal** may be, for example, a sensor's measured temperature value (example for 20 °C signal shown in the image below). It is securely sent to the JUMO Cloud computer center via a device from the JUMO variTRON family using an encrypted protocol.

The new Single Pair Ethernet sensors from JUMO are also able to send their measured process values directly to the JUMO cloud.

The signal/measured temperature value in the JUMO Cloud can be viewed and managed via www.jumo.cloud. Here, the entire communication is also encrypted. In order to ensure extra security for the client, the data is efficiently saved redundantly in a German computer center in compliance with the GDPR.

And JUMO can also easily answer the question "Who does the data belong to?": It is only you!

Schematic process for communication



JUMO GmbH & Co. KG

Delivery address: Mackenrodtstraße 14
36039 Fulda, Germany
Postal address: 36035 Fulda, Germany
Phone: +49 661 6003-0
Fax: +49 661 6003-607
Email: mail@jumo.net
Internet: www.jumo.net

JUMO UK LTD

JUMO House
Temple Bank, Riverway
Harlow, Essex, CM20 2DY, UK
Phone: +44 1279 63 55 33
Fax: +44 1279 62 50 29
Email: sales@jumo.co.uk
Internet: www.jumo.co.uk

JUMO Process Control, Inc.

6724 Joy Road
East Syracuse, NY 13057, USA
Phone: +1 315 437 5866
Fax: +1 315 437 5860
Email: info.us@jumo.net
Internet: www.jumousa.com

**NOTE!**

An Internet connection is required to transfer the data from the JUMO variTRON to the computer center. The transfer can be wireless or cable-based.

JUMO smartWARE SCADA is listed as an alternative in the figure above. If the JUMO Cloud application is to be hosted and administered by the user, JUMO smartWARE SCADA is a good solution.

**NOTE!**

If you use the JUMO variTRON as a gateway, further information from different devices can be sent to the JUMO Cloud. The following protocols are supported, amongst others: OPC UA, Modbus TCP, S7 TCP, KNX, BACnet, MQTT.

Further information and downloads

JUMO variTRON



[qr-705002-en.jumo.info](https://www.jumo.info/qr-705002-en)

JUMO GmbH & Co. KG
 Delivery address: Mackenrodtstraße 14
 36039 Fulda, Germany
 Postal address: 36035 Fulda, Germany
 Phone: +49 661 6003-0
 Fax: +49 661 6003-607
 Email: mail@jumo.net
 Internet: www.jumo.net

JUMO UK LTD
 JUMO House
 Temple Bank, Riverway
 Harlow, Essex, CM20 2DY, UK
 Phone: +44 1279 63 55 33
 Fax: +44 1279 62 50 29
 Email: sales@jumo.co.uk
 Internet: www.jumo.co.uk

JUMO Process Control, Inc.
 6724 Joy Road
 East Syracuse, NY 13057, USA
 Phone: +1 315 437 5866
 Fax: +1 315 437 5860
 Email: info.us@jumo.net
 Internet: www.jumousa.com

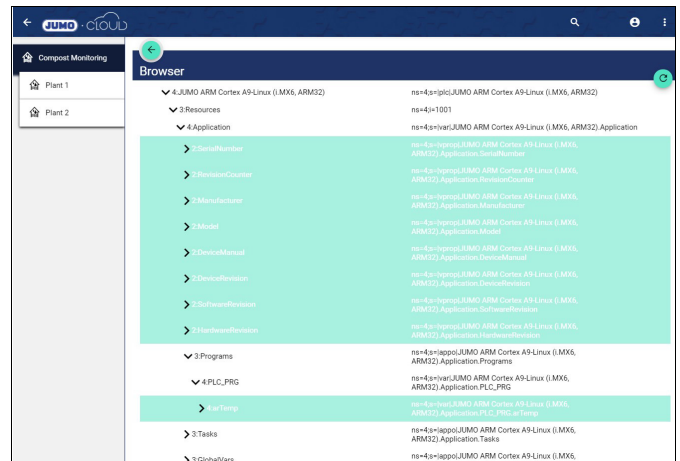


Functions

Data and facts

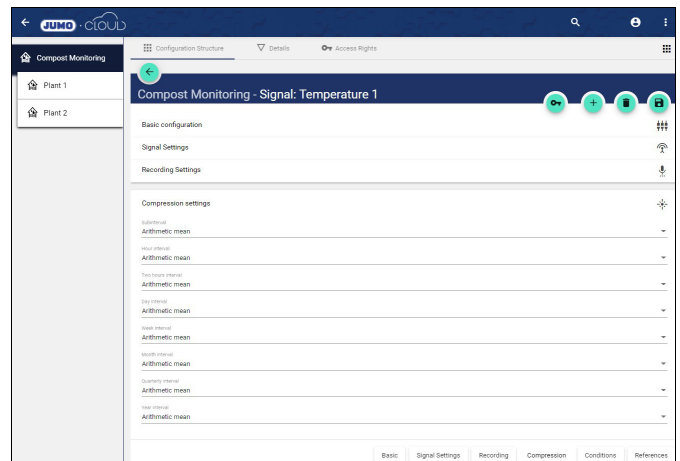
Data archiving:

- Configurable data acquisition
- Acquisition of the average value, last value, minimum and/or maximum
- Acquisition according to the delta event method
- Acquisition cycle at a speed of up to 1 second
- Extremely compact storage of raw data



Data compression:

- Minor interval can be set; 15 minutes as standard
- Hourly interval, two-hourly interval, daily interval, weekly interval, monthly interval, quarterly interval, and annual interval preconfigured
- Min/max reference can be set per evaluation (for example daily data with max/max values from the two-hour values)
- In-memory calculation of predefined intervals and free intervals possible at any time
- Extremely compact storage of pre-compressed data



Script module:

- Integrated script editor
- Scripts can be created that are triggered based on events
- API for access to variables, events, current and historical data

JUMO GmbH & Co. KG
 Delivery address: Mackenrodtstraße 14
 36039 Fulda, Germany
 Postal address: 36035 Fulda, Germany
 Phone: +49 661 6003-0
 Fax: +49 661 6003-607
 Email: mail@jumo.net
 Internet: www.jumo.net

JUMO UK LTD
 JUMO House
 Temple Bank, Riverway
 Harlow, Essex, CM20 2DY, UK
 Phone: +44 1279 63 55 33
 Fax: +44 1279 62 50 29
 Email: sales@jumo.co.uk
 Internet: www.jumo.co.uk

JUMO Process Control, Inc.
 6724 Joy Road
 East Syracuse, NY 13057, USA
 Phone: +1 315 437 5866
 Fax: +1 315 437 5860
 Email: info.us@jumo.net
 Internet: www.jumousa.com



Trends, reports, and scheduler

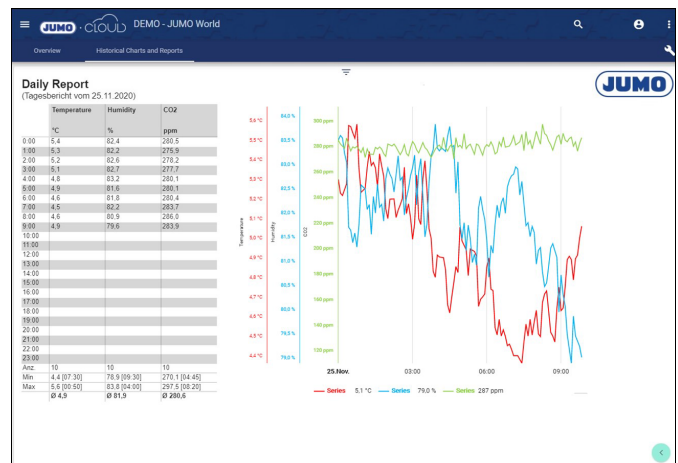
Trends:

- Display of current and historical data
- Value/timing charts
- Any number of axes and lines; any number of lines per axis
- Display as lines (solid, dashed or dotted), step lines, steps, curved lines, and column series
- Time comparisons across multiple time axes
- Zoom using mouse/touch, shifting of the time range using time bars (possible vertically and horizontally)
- Automatic key
- Ruler for reading the values and time with a locking function
- User configurable balloon tool tips for the value at the time that is shown
- Export of data to CSV, XLSX, PDF, JSON, and HTML as well as printing directly from the chart
- Pie chart
- Option to display minimum, maximum and average values for each series
- Option to insert manual comments within the trend display



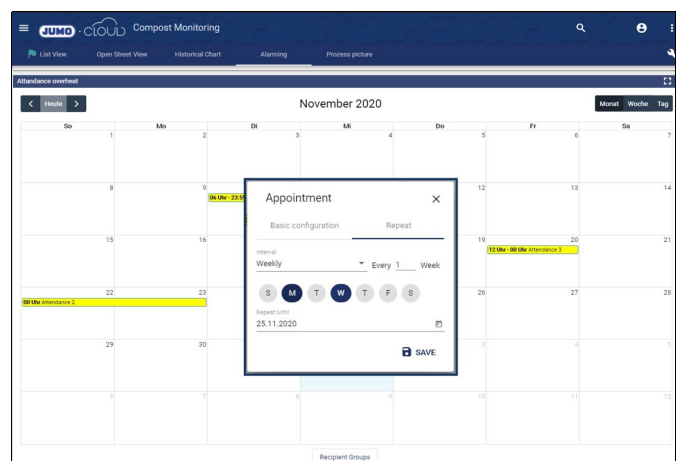
Batches and reports:

- Web-based reports (signed daily, weekly, and monthly reports)
- Output in the browser, download as PDF or Excel file
- Automatic delivery by Email or storage in the directory path
- Report Designer to quickly and easily create customized reports
- Templates can also be designed using HTML, more complex calculations can be programmed via JavaScript
- Manual entry of signal values and comments
- Industry-specific templates for energy, water, and wastewater
- Start, stop and sign batches, enter header data, evaluate and filter past batches



Scheduler:

- Timer/timer switch programs for setting target values according to plan
- One-time events and series
- Value changes at the start and end of an event can be parameterized



JUMO GmbH & Co. KG
 Delivery address: Mackenrodtstraße 14
 36039 Fulda, Germany
 Postal address: 36035 Fulda, Germany
 Phone: +49 661 6003-0
 Fax: +49 661 6003-607
 Email: mail@jumo.net
 Internet: www.jumo.net

JUMO UK LTD
 JUMO House
 Temple Bank, Riverway
 Harlow, Essex, CM20 2DY, UK
 Phone: +44 1279 63 55 33
 Fax: +44 1279 62 50 29
 Email: sales@jumo.co.uk
 Internet: www.jumo.co.uk

JUMO Process Control, Inc.
 6724 Joy Road
 East Syracuse, NY 13057, USA
 Phone: +1 315 437 5866
 Fax: +1 315 437 5860
 Email: info.us@jumo.net
 Internet: www.jumousa.com



Alarm and event system

Alarm system:

- User configurable event classes with classification (note, warning, malfunction) and acknowledgement requirement yes/no
- Any number of conditions per signal with logical comparators ($>$, $>=$, $=$, $<=$, $<$, $?=$) and values; separate for when the event occurs and when the event stops
- Start and stop delay can be configured per condition
- Graphic event editor with AND, OR and NOT logic blocks
- Event editor links conditions, monitoring and system parameters (recording monitoring, signal interference, data source interference, etc.)

Name	Event Category	Incoming	Outgoing on	Received On	Received by	✓	🔄
Overheat Alarm	Overheat	25.11.2020 10:30:45				✓	
Test - Overheat Alarm	Overheat	25.11.2020 10:29:29	25.11.2020 10:29:30			✓	
Overheat Alarm	Overheat	25.11.2020 10:28:45	25.11.2020 10:29:12			✓	
Overheat Alarm	Overheat	25.11.2020 10:26:46	25.11.2020 10:27:12	25.11.2020 10:30:46	Nico Müller		
Overheat Alarm	Overheat	25.11.2020 10:24:46	25.11.2020 10:25:12	25.11.2020 10:29:36	Nico Müller		
Overheat Alarm	Overheat	25.11.2020 10:22:45	25.11.2020 10:23:12	25.11.2020 10:29:35	Nico Müller		

Alarm cascade settings		Notification type	Time out
Nico Müller	Only 10	Private	10 minutes
Max Musterman	1	Business	Hours

Monitoring:

- Minimum/leakage/pipe leakage monitoring
- Maximum and periodic maximum monitoring
- Change rate monitoring
- Plausibility monitoring
- Position monitoring (map-based) Difference monitoring

Compost Monitoring - Monitoring
Basic configuration
MIN - Max Monitoring
Description
Input
Path
Minimum Monitoring
Maximum Monitoring
Periodic Maximum Monitoring
Change Rate Monitoring
Plausibility Monitoring
Position Monitoring

Remote alarm:

- Availability planner
- Recipient and recipient group management
- Establishing of alarm cascades
- Multiple cycles of an alarm cascade possible
- Alarm notifications via SMS^a, email, MS Teams, and Telegram possible
- Push messages sent to smartphone app, sound until they are acknowledged
- Voice calls^a with synthesized voice for outputting any message text
- Archiving of all remote alarm steps

Compost Monitoring - Recipient: Max Musterman		Basic configuration of the recipient
Contact Possibilities		
Type	Business	Email
Value	info@jumo.net	
Type	Private	VOIP
Value	+49173265188	
Type	BusinessMail	Push-over Contact
Value	API Key	
Type	PrivateMail	SMS
Value	+491732644311	

^a A separate Sipgate account is required to use voice calls that leave other European countries and for SMS alerts. For further questions, please contact the JUMO contact person.

JUMO GmbH & Co. KG
 Delivery address: Mackenrodtstraße 14
 36039 Fulda, Germany
 Postal address: 36035 Fulda, Germany
 Phone: +49 661 6003-0
 Fax: +49 661 6003-607
 Email: mail@jumo.net
 Internet: www.jumo.net

JUMO UK LTD
 JUMO House
 Temple Bank, Riverway
 Harlow, Essex, CM20 2DY, UK
 Phone: +44 1279 63 55 33
 Fax: +44 1279 62 50 29
 Email: sales@jumo.co.uk
 Internet: www.jumo.co.uk

JUMO Process Control, Inc.
 6724 Joy Road
 East Syracuse, NY 13057, USA
 Phone: +1 315 437 5866
 Fax: +1 315 437 5860
 Email: info.us@jumo.net
 Internet: www.jumousa.com



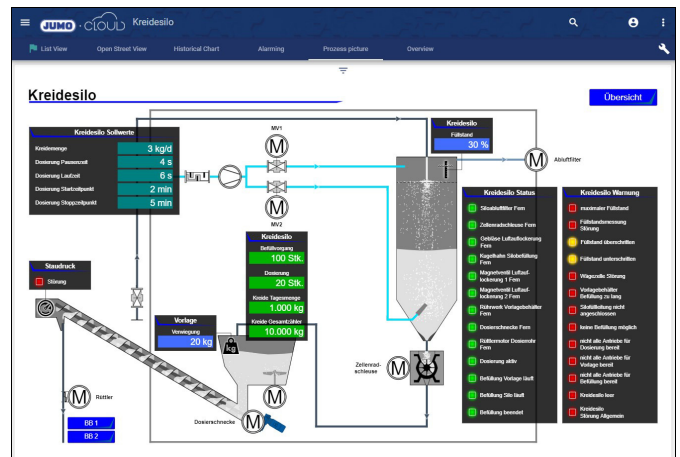
Add-ons

Maintenance: (upon request)

- Definition of maintenance tasks possible in a time or signal-based manner
- Document attachment
- Acknowledgement of maintenance and resetting of specific operating hours counter possible

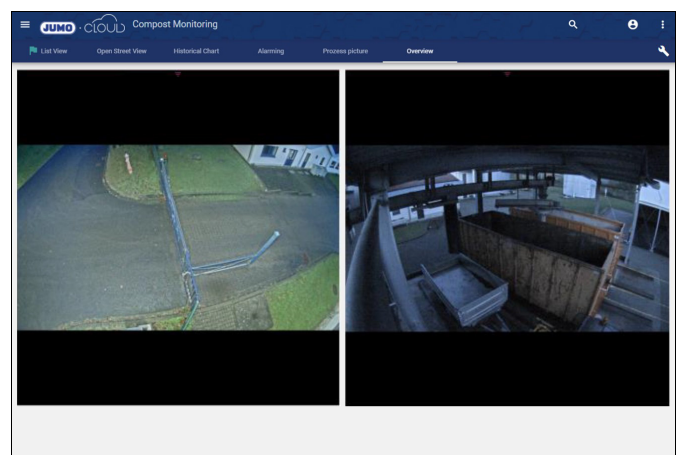
Process visualization:

- Vector-based, self-scaling process screens
- Editor with integrated animation and test tool
- Configurable links and interactions



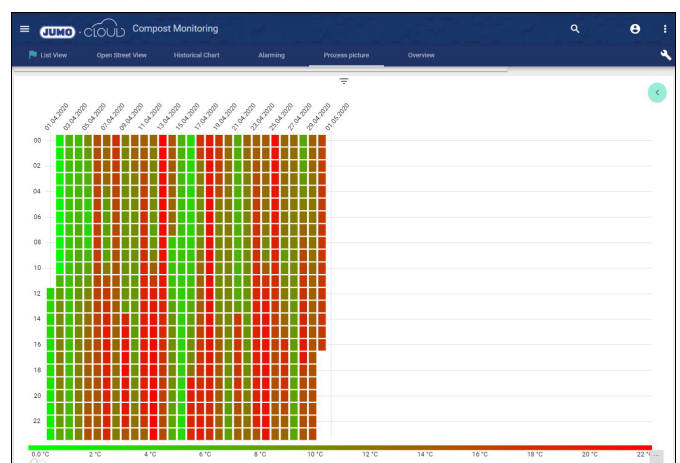
Camera integration:

- Integration of (M)JPEG camera (standard IP camera)
- Display of live image
- Archiving of camera images and sequences in a manner that is event and time-controlled
- Call up of camera images and sequences
- User configurable acknowledgement requirement for camera images and sequences
- Integration of up to 5 cameras (as standard) per customer



Energy package/ISO 50001 compliant:

- Heat map
- Sankey/flow chart with any number of nodes and connections between them
- Combined with functions from trending and reporting



JUMO GmbH & Co. KG
Delivery address: Mackenrodtstraße 14
36039 Fulda, Germany
Postal address: 36035 Fulda, Germany
Phone: +49 661 6003-0
Fax: +49 661 6003-607
Email: mail@jumo.net
Internet: www.jumo.net

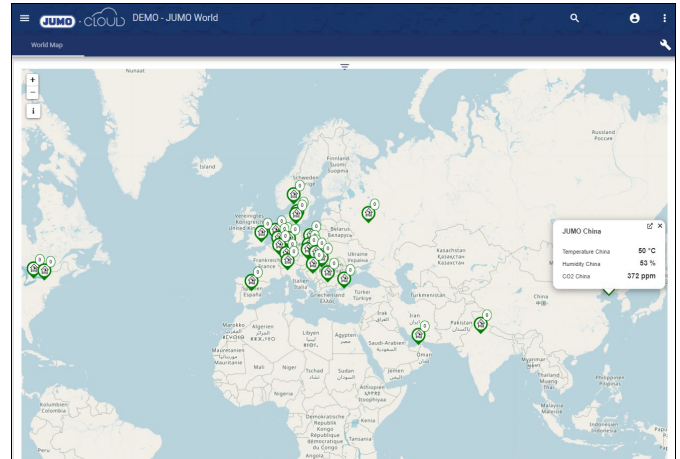
JUMO UK LTD
JUMO House
Temple Bank, Riverway
Harlow, Essex, CM20 2DY, UK
Phone: +44 1279 63 55 33
Fax: +44 1279 62 50 29
Email: sales@jumo.co.uk
Internet: www.jumo.co.uk

JUMO Process Control, Inc.
6724 Joy Road
East Syracuse, NY 13057, USA
Phone: +1 315 437 5866
Fax: +1 315 437 5860
Email: info.us@jumo.net
Internet: www.jumousa.com



Map and GPS integration

- Map as dashboard element
- Display of fixed markers with animation (e.g. malfunction at station) and link
- OpenStreetMap
- Live display of GPS trackers on the map
- Geofencing/position monitoring of GPS trackers
- Display and evaluation of past routes based on GPS data
- Event-based color display of individual route sections (e.g. bilge water dumping)



JUMO GmbH & Co. KG
 Delivery address: Mackenrodtstraße 14
 36039 Fulda, Germany
 Postal address: 36035 Fulda, Germany
 Phone: +49 661 6003-0
 Fax: +49 661 6003-607
 Email: mail@jumo.net
 Internet: www.jumo.net

JUMO UK LTD
 JUMO House
 Temple Bank, Riverway
 Harlow, Essex, CM20 2DY, UK
 Phone: +44 1279 63 55 33
 Fax: +44 1279 62 50 29
 Email: sales@jumo.co.uk
 Internet: www.jumo.co.uk

JUMO Process Control, Inc.
 6724 Joy Road
 East Syracuse, NY 13057, USA
 Phone: +1 315 437 5866
 Fax: +1 315 437 5860
 Email: info.us@jumo.net
 Internet: www.jumousa.com



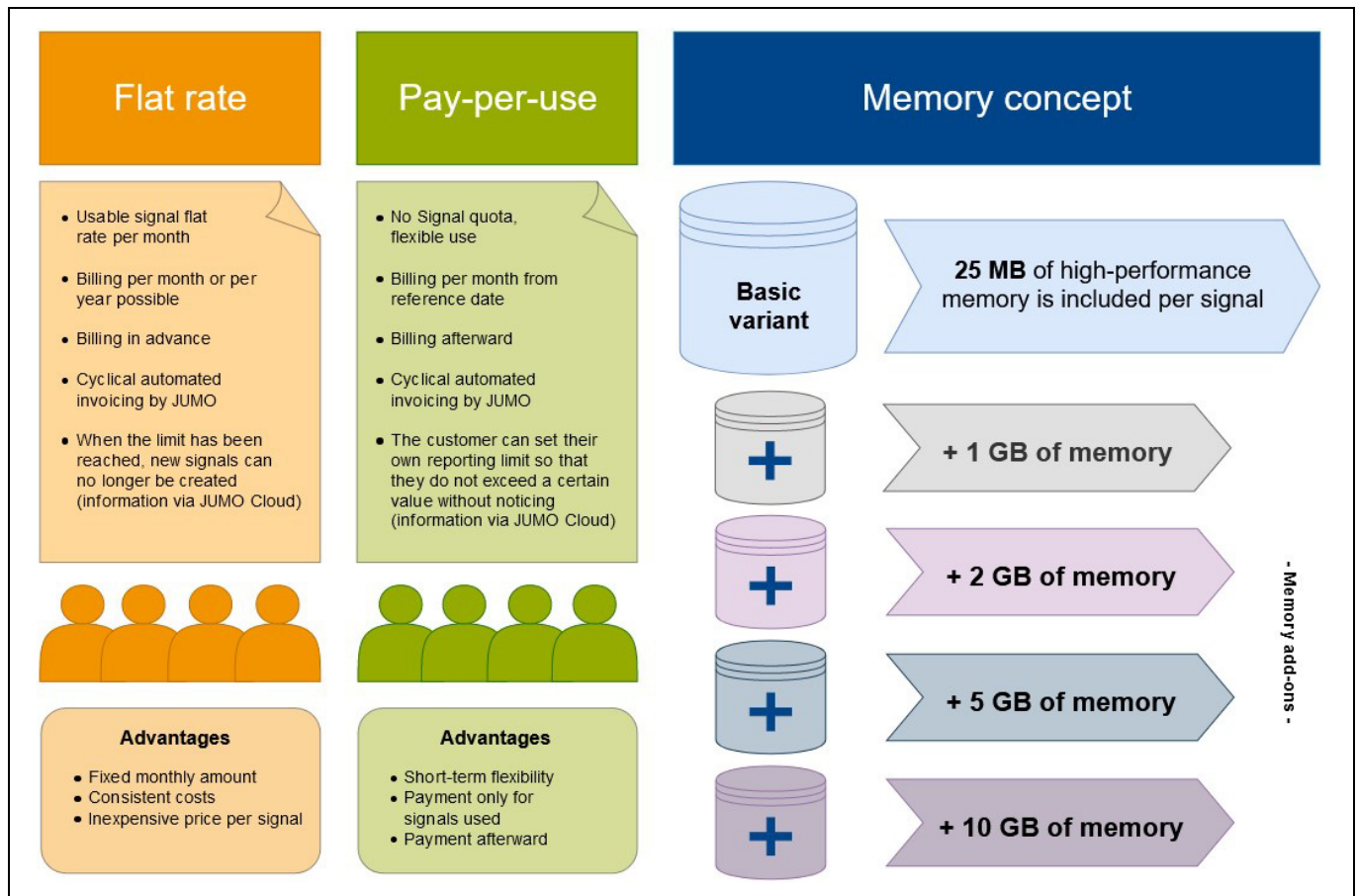
Payment and storage model

In the basic variant, a value can be stored 1.1 million times in the Cloud per signal. This corresponds to 25 MB of high-powered memory per signal. A storage quota is derived from the number of signals purchased and the memory that results from this. The customer can use this as they choose.

An example: A customer purchases 100 signals. This corresponds to a storage quota of 2500 MB and 110 million storage options in the Cloud. For each signal, the customer can now select how long they would like to have it saved. The longer and more frequently they save a signal, the more their storage quota is reduced. Every signal and its historical values are each designed as ring buffers. When 80% of the available storage quota is reached, the customer receives a warning with the possibility to buy additional monthly memory. If the customer would like to store data in the Cloud for longer than is possible in the basic variant, they can also buy additional memory as required.

Depending on the payment model of flat rate or pay-per-use, the customer can buy a certain number of signals per month. For the flat rate model, a defined signal flat rate per month is bought. In contrast, with the pay-per-use model, the signals used on the reference date are billed. Invoicing is on-going depending on the model.

Payment and storage model scheme



JUMO GmbH & Co. KG
 Delivery address: Mackenrodtstraße 14
 36039 Fulda, Germany
 Postal address: 36035 Fulda, Germany
 Phone: +49 661 6003-0
 Fax: +49 661 6003-607
 Email: mail@jumo.net
 Internet: www.jumo.net

JUMO UK LTD
 JUMO House
 Temple Bank, Riverway
 Harlow, Essex, CM20 2DY, UK
 Phone: +44 1279 63 55 33
 Fax: +44 1279 62 50 29
 Email: sales@jumo.co.uk
 Internet: www.jumo.co.uk

JUMO Process Control, Inc.
 6724 Joy Road
 East Syracuse, NY 13057, USA
 Phone: +1 315 437 5866
 Fax: +1 315 437 5860
 Email: info.us@jumo.net
 Internet: www.jumousa.com



Sample calculation

Signals required:	200 signals
Memory cycle:	200 signals every 5 minutes (1)
Storage time required:	10 years (due to audit)
Available storage quota:	$200 \text{ signals} \times 25 \text{ MB} = \mathbf{5000 \text{ MB}}$
Storage options:	$200 \times 1.1 \text{ million} = \mathbf{220 \text{ million}}$
(1) Required storage:	$200 \text{ signals} \times 10 \text{ years} \times (525\,600 \text{ minutes} : 5) = 210\,240\,000$
Required storage quota:	$210\,240\,000 \times (25 : 1\,100\,000) = \mathbf{4\,779 \text{ MB}}$
Required memory add-on:	None as required storage quota < available storage quota



NOTE

1 year has 525 600 minutes or 31 540 000 seconds

Signals required:	100 signals
Memory cycle:	60 signals every 3 minutes (1)
	40 signals every minute (2)
Storage time required:	5 years (due to audit)
Available storage quota:	$100 \text{ signals} \times 25 \text{ MB} = \mathbf{2\,500 \text{ MB}}$
Storage options:	$100 \times 1.1 \text{ million} = \mathbf{110 \text{ million}}$
(1) Required storage:	$60 \text{ signals} \times 5 \text{ years} \times (525\,600 \text{ minutes} : 3) = 52\,560\,000$
(2) Required storage:	$40 \text{ signals} \times 5 \text{ years} \times 525\,600 \text{ minutes} = 105\,120\,000$
Required storage quota:	$(52\,560\,000 + 105\,120\,000) \times (25 : 1\,100\,000) = \mathbf{3\,584 \text{ MB}}$
Required memory add-on:	2 GB
Available storage quota with add-on:	4 500 MB

JUMO GmbH & Co. KG
Delivery address: Mackenrodtstraße 14
36039 Fulda, Germany
Postal address: 36035 Fulda, Germany
Phone: +49 661 6003-0
Fax: +49 661 6003-607
Email: mail@jumo.net
Internet: www.jumo.net

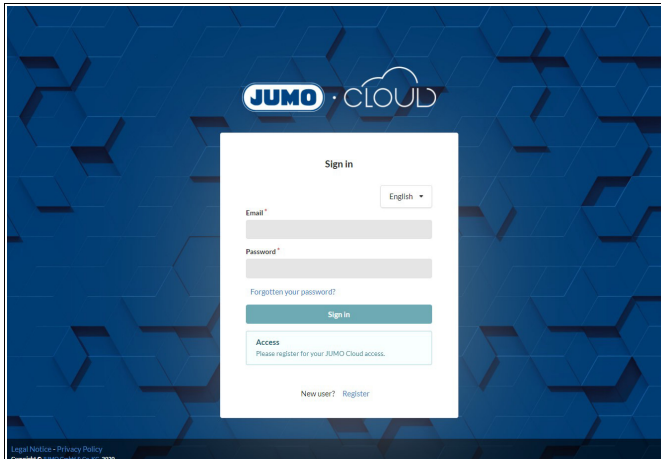
JUMO UK LTD
JUMO House
Temple Bank, Riverway
Harlow, Essex, CM20 2DY, UK
Phone: +44 1279 63 55 33
Fax: +44 1279 62 50 29
Email: sales@jumo.co.uk
Internet: www.jumo.co.uk

JUMO Process Control, Inc.
6724 Joy Road
East Syracuse, NY 13057, USA
Phone: +1 315 437 5866
Fax: +1 315 437 5860
Email: info.us@jumo.net
Internet: www.jumousa.com

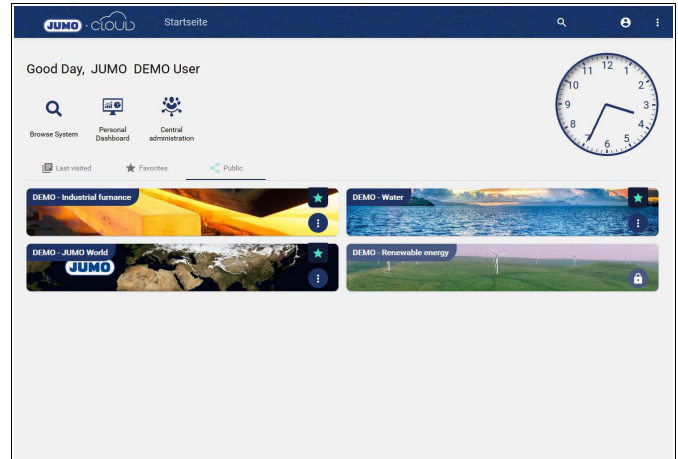


Access to Cloud

1. Register and look at demo applications



Register at www.jumo.cloud, confirm email, and log in.



In the "Public" tab, click on the padlock symbol at the bottom right and request access to the demo.

2. Send request to JUMO

Send request to the applicable sales employee or to mail@jumo.net.

3. Consulting and discussion of concept together

4. Test phase with JUMO Cloud starter kit and JUMO online documentation possible (please see "Worth knowing"), ⇒ chapter "Worth knowing", Page 12

5. Place order and select payment model

6. Set up JUMO Cloud dashboards yourself, request engineering services or JUMO Campus training

JUMO GmbH & Co. KG
Delivery address: Mackenrodtstraße 14
36039 Fulda, Germany
Postal address: 36035 Fulda, Germany
Phone: +49 661 6003-0
Fax: +49 661 6003-607
Email: mail@jumo.net
Internet: www.jumo.net

JUMO UK LTD
JUMO House
Temple Bank, Riverway
Harlow, Essex, CM20 2DY, UK
Phone: +44 1279 63 55 33
Fax: +44 1279 62 50 29
Email: sales@jumo.co.uk
Internet: www.jumo.co.uk

JUMO Process Control, Inc.
6724 Joy Road
East Syracuse, NY 13057, USA
Phone: +1 315 437 5866
Fax: +1 315 437 5860
Email: info.us@jumo.net
Internet: www.jumousa.com



Worth knowing

Always up-to-date

When using the JUMO Cloud, you regularly receive the latest updates and functions which you can use with immediate effect and integrate into your process.

Completely secure

All of the data stored in the JUMO Cloud belongs to you! It is not forwarded to any third-party states, companies, or institutions. The computer center is also certified in accordance with ISO 27.001, is GDPR compliant, and is subject to the strictest access restrictions. The entire communication path is also encrypted.

Do you need support?

If you need more information, simple explanations, training courses, or support, there are a range of options available to you from JUMO.



Online-Help-Center

Detailed
documentation



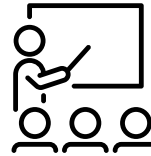
Technical Support

Questions and information



JUMO Engineering

Services



JUMO Campus

Training courses



YouTube-Channel

Explanatory videos

Delivery address: Mackenrodtstraße 14
36039 Fulda, Germany
Postal address: 36035 Fulda, Germany
Phone: +49 661 6003-0
Fax: +49 661 6003-607
Email: mail@jumo.net
Internet: www.jumo.net

JUMO House
Temple Bank, Riverway
Harlow, Essex, CM20 2DY, UK
Phone: +44 1279 63 55 33
Fax: +44 1279 62 50 29
Email: sales@jumo.co.uk
Internet: www.jumo.co.uk

JUMO Process Control, Inc.
6724 Joy Road
East Syracuse, NY 13057, USA
Phone: +1 315 437 5866
Fax: +1 315 437 5860
Email: info.us@jumo.net
Internet: www.jumousa.com



	(1) Basic type
701810	JUMO Cloud – IoT platform for reliable process management
	(2) Payment variant
1	Flat rate
2	Pay-per-use
	(3) Billing
1	monthly
2	annually
	(4) Signals, monthly flat rate
00	None
100	100 signals
150	150 signals
300	300 signals
500	500 signals
750	750 signals
	(5) Signals, annual flat rate
00	None
25	25 signals
50	50 signals
100	100 signals
150	150 signals
300	300 signals
500	500 signals
750	750 signals
	(6) Signals, monthly pay-per-use
00	None
100 - 149	100 - 149 signals
150 - 299	150 - 299 signals
300 - 499	300 - 499 signals
500 - 749	500 - 749 signals
750 - 1000	750 - 1000 signals
1000 - 100000	1000 - 100000 signals
	(7) Extra codes (optional)
...	...

	(1)	(2)	(3)	(4)	(5)	(6)	(7)
Order code	<input type="text"/>	/	<input type="text"/>	-	<input type="text"/>	-	<input type="text"/>
Order example	701810	/	1	-	2	-	00

JUMO GmbH & Co. KG

Delivery address: Mackenrodtstraße 14
36039 Fulda, Germany
Postal address: 36035 Fulda, Germany
Phone: +49 661 6003-0
Fax: +49 661 6003-607
Email: mail@jumo.net
Internet: www.jumo.net

JUMO UK LTD

JUMO House
Temple Bank, Riverway
Harlow, Essex, CM20 2DY, UK
Phone: +44 1279 63 55 33
Fax: +44 1279 62 50 29
Email: sales@jumo.co.uk
Internet: www.jumo.co.uk

JUMO Process Control, Inc.

6724 Joy Road
East Syracuse, NY 13057, USA
Phone: +1 315 437 5866
Fax: +1 315 437 5860
Email: info.us@jumo.net
Internet: www.jumousa.com



Accessories

Designation	Part no.
Memory add-on + 1 GB	00751309
Memory add-on + 2 GB	00748799
Memory add-on + 5 GB	00748797
Memory add-on + 10 GB	00748804

Starter kit (only one starter kit per customer possible)

Designation	Part no.
JUMO Cloud access with own test client (for the test period of 30 days) + JUMO variTRON 300 + JUMO wTRANS T01	00748800
JUMO Cloud access with own test client (for the test period of 30 days) + JUMO variTRON 500 + Reglermodul	00748802