

JUMO GmbH & Co. KG
 Delivery address: Mackenrodtstraße 14
 36039 Fulda, Germany
 Postal address: 36035 Fulda, Germany
 Phone: +49 661 6003-0
 Fax: +49 661 6003-607
 Email: mail@jumo.net
 Internet: www.jumo.net

JUMO UK LTD
 JUMO House
 Temple Bank, Riverway
 Harlow, Essex, CM20 2DY, UK
 Phone: +44 1279 63 55 33
 Fax: +44 1279 62 50 29
 Email: sales@jumo.co.uk
 Internet: www.jumo.co.uk

JUMO Process Control, Inc.
 6724 Joy Road
 East Syracuse, NY 13057, USA
 Phone: +1 315 437 5866
 Fax: +1 315 437 5860
 Email: info.us@jumo.net
 Internet: www.jumousa.com



Data Sheet 701820

Page 1/15

JUMO smartWARE SCADA

Software for process monitoring and control

Brief description

The JUMO smartWARE SCADA software provides easy access to measurement data using conventional web browsers. It offers functions for process visualization as well as for evaluation of the acquired data. The software also supports manufacturing and work processes with valuable visualization, alarm, and planning functions.



Maximum transparency

for your processes with individually configurable user rights and dashboards



Unlimited access

to the dashboards with any number of end devices via common web browsers without carrying out installation



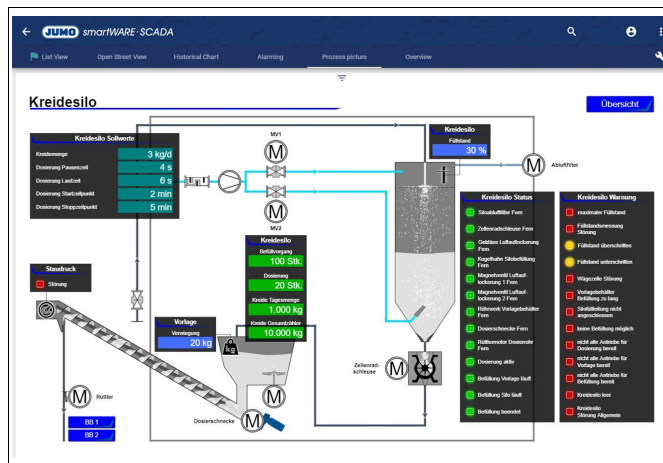
Reduced outlay

due to outstanding report and export functions

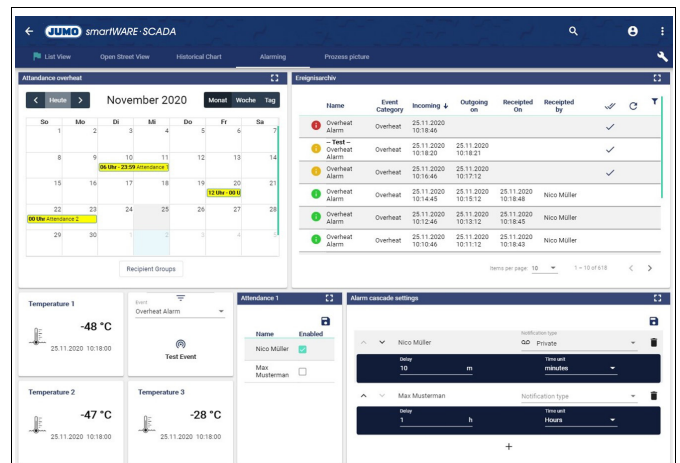


Alarm management

through data evaluation, availability planning, monitoring and remote alarm functions



Visualization of process screens



Availability planning and remote alarm

JUMO GmbH & Co. KG
 Delivery address: Mackenrodtstraße 14
 36039 Fulda, Germany
 Postal address: 36035 Fulda, Germany
 Phone: +49 661 6003-0
 Fax: +49 661 6003-607
 Email: mail@jumo.net
 Internet: www.jumo.net

JUMO UK LTD
 JUMO House
 Temple Bank, Riverway
 Harlow, Essex, CM20 2DY, UK
 Phone: +44 1279 63 55 33
 Fax: +44 1279 62 50 29
 Email: sales@jumo.co.uk
 Internet: www.jumo.co.uk

JUMO Process Control, Inc.
 6724 Joy Road
 East Syracuse, NY 13057, USA
 Phone: +1 315 437 5866
 Fax: +1 315 437 5860
 Email: info.us@jumo.net
 Internet: www.jumousa.com



System architecture

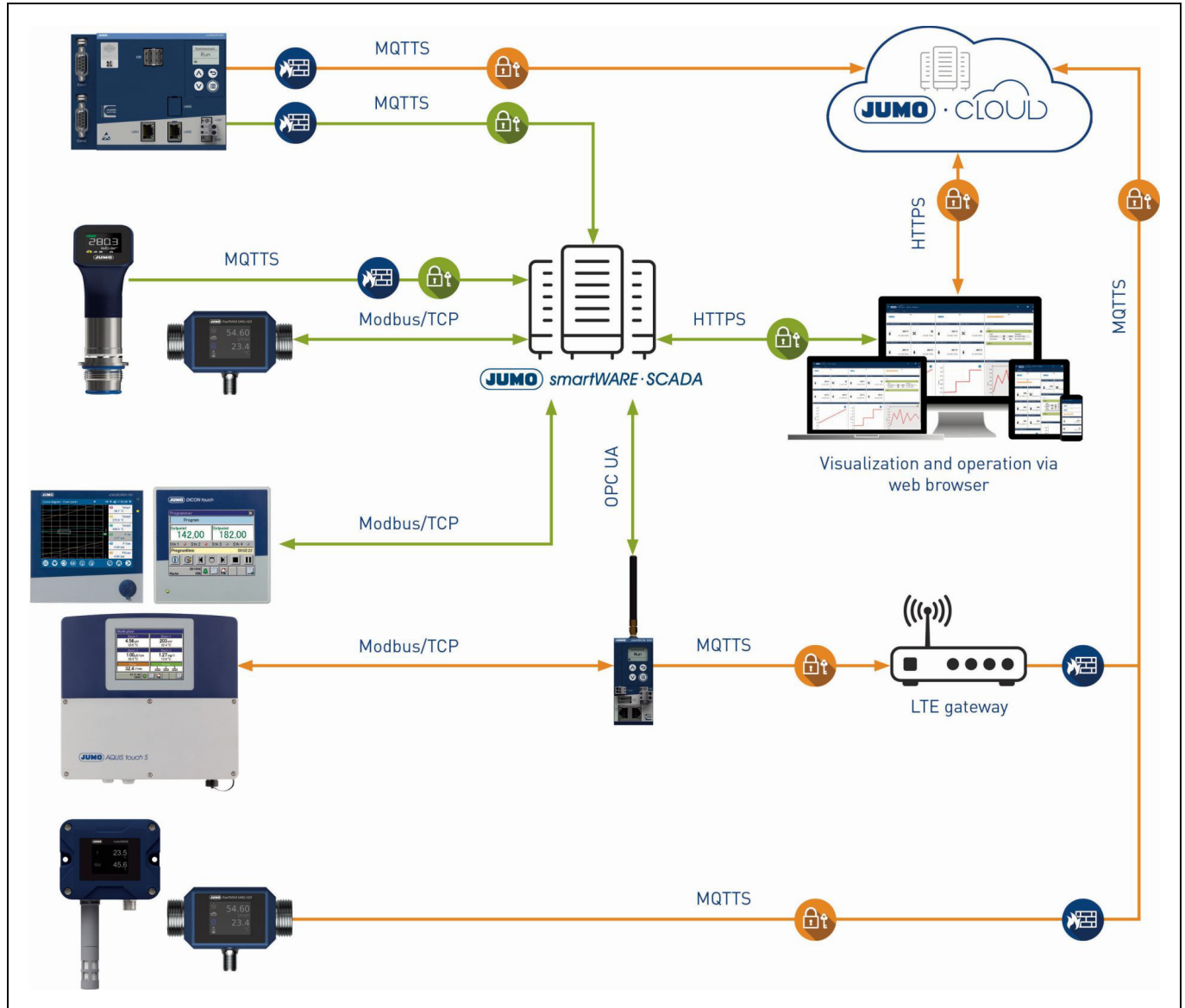
Supported operating systems <ul style="list-style-type: none"> Linux with 64 bit: Ubuntu 22.04 and 24.04 (LTS), JUMO recommendation Windows 10 with 64 bit with version 22H2 (with activated WSL2 at least version 1.1.3.0, Docker Desktop) Windows 11 with 64 bit with version 21H2 (with activated WSL2 at least version 1.1.3.0, Docker Desktop) <p>The application can be used via a virtual machine with Microsoft Hyper-V (Generation 2) and VM Ware.</p>	Supported database systems <ul style="list-style-type: none"> MongoDB (open source/commercial) Azure DocumentDB
Supported browsers <ul style="list-style-type: none"> Microsoft Edge (Chromium) on Windows Google Chrome on Windows, macOS, and Android Apple Safari on iOS 	Object orientation <ul style="list-style-type: none"> Templates for complex, nested objects can be configured Any number of templates Any number of instances of a template Automatic and manual updating of the instances of a template Graphic objects and dashboards can be used as templates
Security <ul style="list-style-type: none"> End-to-end encryption Browser access via HTTPS Gateway connections via MQTT/TLS User management with password rules Two-factor authentication (OTP) Development according to DIN IEC/ISO 27001 <p>Further security-relevant information can be found in the system manual: → Online-Help-Center, page 11.</p>	Redundancy <ul style="list-style-type: none"> Active cluster function Automatic load distribution Automatic client switching Automatic synchronization of current, historical, and project planning data Support for redundant communication channels
Docker <p>The application is operated on a Docker system. Accordingly, Docker must be installed as the basis: https://docs.docker.com/</p>	Hardware <p>Minimum requirements:</p> <ul style="list-style-type: none"> Quad core with hyperthreading 16 GB RAM SSD hard disk drive

Dongle licensing

Software <p>After purchasing the application, the software license key is sent by e-mail together with installation instructions. The license key can then be linked to the server application (UID). This process can only be carried out once. The license is then permanently linked to the server application.</p>	Hardware <p>The hardware dongle consists of a USB stick containing the software license key together with installation instructions. This type of licensing is only required for customs reasons. Once the license key has been received, it can be linked to the server application (UID). This process can only be carried out once. The license is then permanently linked to a server application.</p>
---	---



Schematic process for communication



And many other interfaces including M-Bus, Beckhoff ADS.NET, S7 TCP, REST API,
 ⇒ "Driver ", Page 10.

The JUMO Cloud is listed as an alternative in the figure above. If the SCADA application is not to be hosted and administered in-house, the JUMO Cloud is a good solution.

JUMO GmbH & Co. KG
 Delivery address: Mackenrodtstraße 14
 36039 Fulda, Germany
 Postal address: 36035 Fulda, Germany
 Phone: +49 661 6003-0
 Fax: +49 661 6003-607
 Email: mail@jumo.net
 Internet: www.jumo.net

JUMO UK LTD
 JUMO House
 Temple Bank, Riverway
 Harlow, Essex, CM20 2DY, UK
 Phone: +44 1279 63 55 33
 Fax: +44 1279 62 50 29
 Email: sales@jumo.co.uk
 Internet: www.jumo.co.uk

JUMO Process Control, Inc.
 6724 Joy Road
 East Syracuse, NY 13057, USA
 Phone: +1 315 437 5866
 Fax: +1 315 437 5860
 Email: info.us@jumo.net
 Internet: www.jumousa.com



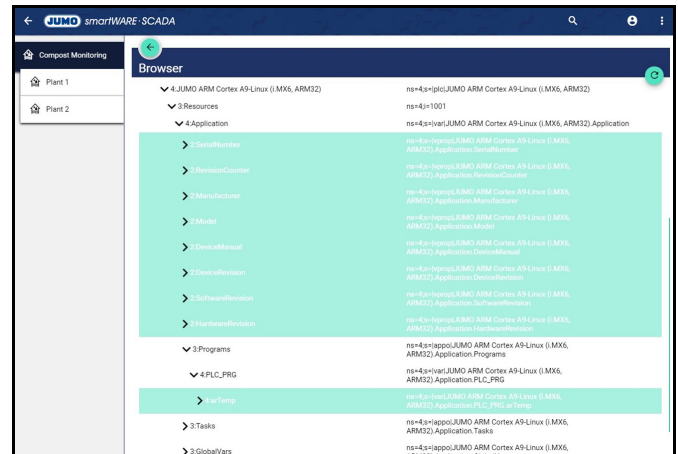
Functions

All function blocks/modules not indicated are included in the standard software scope. All indicated functions/modules must be additionally selected using the order code and comply with the relevant size of the signal quantity (XS, S, M, L) selected at the start.

Data and facts

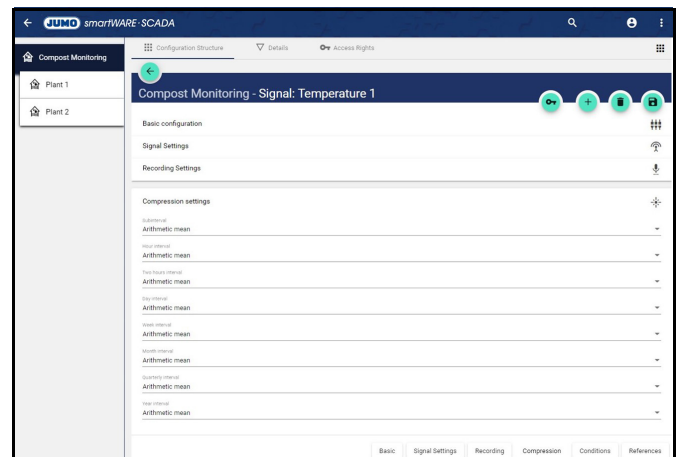
Data archiving:

- Configurable data acquisition
- Acquisition of the average value, last value, minimum and/or maximum
- Acquisition according to the delta event method
- Acquisition cycle at a speed of up to 1 second
- Extremely compact storage of raw data



Data compression:

- Minor interval can be set; 15 minutes as standard
- Hourly interval, two-hourly interval, daily interval, weekly interval, monthly interval, quarterly interval, and annual interval preconfigured
- Min/max reference can be set per evaluation (for example daily data with max/max values from the two-hour values)
- In-memory calculation of predefined intervals and free intervals possible at any time
- Extremely compact storage of pre-compressed data



Script module:^a

- Integrated script editor
- Scripts can be created that are triggered based on events
- API for access to variables, events, current and historical data

^a The functions are included in the order details under "script module".

JUMO GmbH & Co. KG
 Delivery address: Mackenrodtstraße 14
 36039 Fulda, Germany
 Postal address: 36035 Fulda, Germany
 Phone: +49 661 6003-0
 Fax: +49 661 6003-607
 Email: mail@jumo.net
 Internet: www.jumo.net

JUMO UK LTD
 JUMO House
 Temple Bank, Riverway
 Harlow, Essex, CM20 2DY, UK
 Phone: +44 1279 63 55 33
 Fax: +44 1279 62 50 29
 Email: sales@jumo.co.uk
 Internet: www.jumo.co.uk

JUMO Process Control, Inc.
 6724 Joy Road
 East Syracuse, NY 13057, USA
 Phone: +1 315 437 5866
 Fax: +1 315 437 5860
 Email: info.us@jumo.net
 Internet: www.jumousa.com



Trends, reports, and scheduler

Trends:

- Display of current and historical data
- Value/timing charts
- Any number of axes and lines; any number of lines per axis
- Display as lines (continuous, dashed or dotted), step lines, steps, curved lines and column diagram
- Time comparisons across multiple time axes
- Zoom using mouse/touch, move time period using time bar (vertical and horizontal possible)
- Automatic key
- Ruler for reading the values and time with a locking function
- User configurable balloon tool tips for the value at the time that is shown
- Export of data to CSV, XLSX, PDF, JSON, and HTML as well as printing directly from the chart
- Pie chart
- Display of minimum, maximum and average values can be set for each series
- Manual comments can be inserted within the trend display



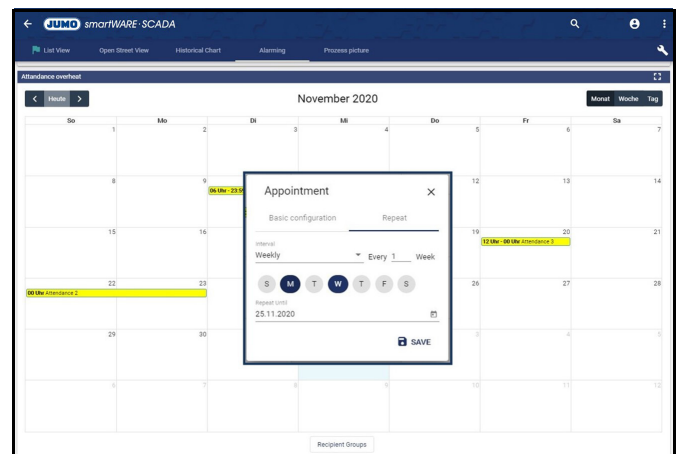
Batches and reports:

- Web-based reports (signed daily, weekly and monthly reports)
- Output in the browser, download as PDF or Excel file
- Automatic dispatch by e-mail or storage in the directory path
- Report Designer to create individual reports quickly and easily^a
- Templates can also be designed using HTML, more complex calculations can be programmed using JavaScript^a
- Manual input of signal values and comments^a
- Industry-specific templates for energy, water and wastewater^a
- Start, stop and sign batches, input of header data, evaluation and filtering of past batches^a



Scheduler:^b

- Timer/timer programs to set setpoints according to schedule
- One-time events and series
- Value changes at the start and end of an event can be parameterized



^a The functions are included in the order details under "advanced reporting".

^b The functions are included in the order details under "Scheduler".

JUMO GmbH & Co. KG
 Delivery address: Mackenrodtstraße 14
 36039 Fulda, Germany
 Postal address: 36035 Fulda, Germany
 Phone: +49 661 6003-0
 Fax: +49 661 6003-607
 Email: mail@jumo.net
 Internet: www.jumo.net

JUMO UK LTD
 JUMO House
 Temple Bank, Riverway
 Harlow, Essex, CM20 2DY, UK
 Phone: +44 1279 63 55 33
 Fax: +44 1279 62 50 29
 Email: sales@jumo.co.uk
 Internet: www.jumo.co.uk

JUMO Process Control, Inc.
 6724 Joy Road
 East Syracuse, NY 13057, USA
 Phone: +1 315 437 5866
 Fax: +1 315 437 5860
 Email: info.us@jumo.net
 Internet: www.jumousa.com



Alarm and event system

Alarm system:

- User configurable event classes with classification (note, warning, malfunction) and acknowledgement requirement yes/no
- Any number of conditions per signal with logical comparators ($>$, \geq , $=$, $<=$, $<$, $?=$) and values; separate for when the event occurs and when the event stops
- Start and stop delay can be configured per condition
- Graphical event editor with logical AND, OR, NOT blocks^a
- Event editor links conditions, monitoring and system parameters (recording monitoring, signal fault, data source fault, etc.)^a

Name	Event Category	Incoming	Outgoing on	Received On	Received by	✓
Overheat Alarm	Overheat	25.11.2020 10:30:45				✓
Test - Overheat Alarm	Overheat	25.11.2020 10:29:29	25.11.2020 10:29:30			✓
Overheat Alarm	Overheat	25.11.2020 10:28:45	25.11.2020 10:29:12			✓
Overheat Alarm	Overheat	25.11.2020 10:26:46	25.11.2020 10:27:12	25.11.2020 10:30:46	Nico Müller	
Overheat Alarm	Overheat	25.11.2020 10:24:46	25.11.2020 10:25:12	25.11.2020 10:29:36	Nico Müller	
Overheat Alarm	Overheat	25.11.2020 10:22:45	25.11.2020 10:23:12	25.11.2020 10:29:35	Nico Müller	

Alarm cascade settings	
Nico Müller	Notification type: Private
Time: 10 m	Time out: minutes
Max Musterman	Notification type: Business
Time: 1 h	Time out: hours

Monitoring:^a

- Minimum/leakage/pipe leakage monitoring
- Maximum and periodic maximum monitoring
- Change rate monitoring
- Plausibility monitoring
- Position monitoring (map-based) Difference monitoring

Compost Monitoring - Monitoring
Basic configuration
Name: MNI - Max Monitoring
Description:
Group: Compost Monitoring
Path:
<input checked="" type="checkbox"/> Minimum Monitoring <input type="checkbox"/> Maximum Monitoring <input type="checkbox"/> Periodic Maximum Monitoring <input type="checkbox"/> Change Rate Monitoring <input type="checkbox"/> Plausibility Monitoring <input type="checkbox"/> Position Monitoring

Remote alarm:^b

- Availability planner^c
- Recipient and recipient group management
- Establishing of alarm cascades
- Multiple cycles of an alarm cascade with max. two alarm options; example: SMS or email or push message and SMS
- Alarm notifications via SMS, email, MS Teams and Telegram possible
- Push messages sent to smartphone app, sound until they are acknowledged
- Voice calls with synthesized voice for outputting any message text^d
- Archiving of all remote alarm steps
- >2-way alarm: more than two alarm options can be set in one alarm cascade; example: SMS, email, voice call, and push message^e

Compost Monitoring - Recipient: Max Musterman	
Basic configuration of the recipient	
Contact Possibilities	
Type: E-Mail	Name: Business, Email: info@jumo.net, <input type="checkbox"/> Enabled
Type: VOP	Name: Private, Phone number: +49172063108, <input type="checkbox"/> Enabled
Type: Push-over Contact	Name: BusinessMail, API key: <input type="checkbox"/> Enabled
Type: SMS	Name: PrivateMail, Phone number: +49172044511, <input type="checkbox"/> Enabled
References	

^a The functions are included in the order details under "advanced events".

^b The functions are included in the order details under "Standard notification".

^c The functions are included in the order details under "Availability planner".

^d The functions are included in the order details under "Advanced notification" (standard notification included).

^e The functions are included in the order details under ">2-way alarm".

JUMO GmbH & Co. KG
 Delivery address: Mackenrodtstraße 14
 36039 Fulda, Germany
 Postal address: 36035 Fulda, Germany
 Phone: +49 661 6003-0
 Fax: +49 661 6003-607
 Email: mail@jumo.net
 Internet: www.jumo.net

JUMO UK LTD
 JUMO House
 Temple Bank, Riverway
 Harlow, Essex, CM20 2DY, UK
 Phone: +44 1279 63 55 33
 Fax: +44 1279 62 50 29
 Email: sales@jumo.co.uk
 Internet: www.jumo.co.uk

JUMO Process Control, Inc.
 6724 Joy Road
 East Syracuse, NY 13057, USA
 Phone: +1 315 437 5866
 Fax: +1 315 437 5860
 Email: info.us@jumo.net
 Internet: www.jumousa.com



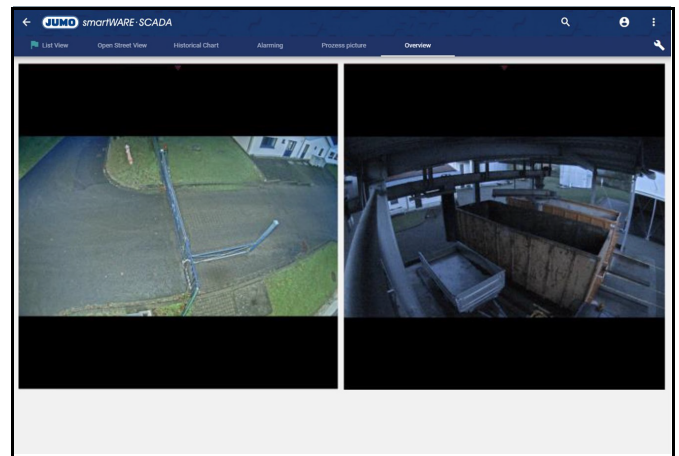
Add-ons

Maintenance: (upon request)

- Definition of maintenance tasks possible in a time or signal-based manner
- Document attachment
- Acknowledgment of maintenance and resetting of specific operating hours counter possible

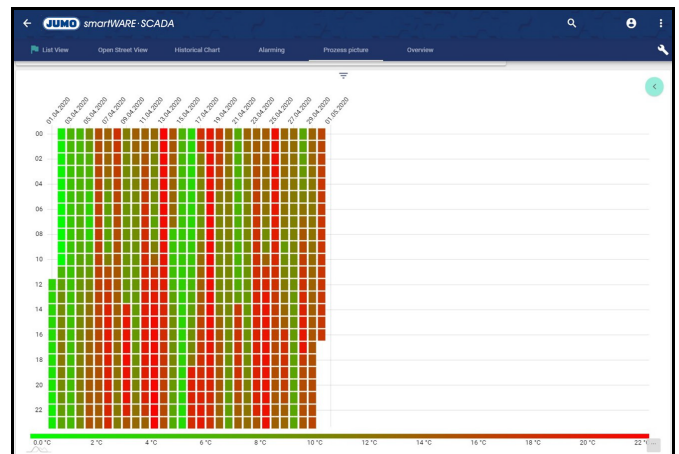
Camera integration;^a

- Integration of (M)JPEG camera (standard IP camera)
- Display of live image
- Archiving of camera images and sequences in a manner that is event and time-controlled
- Call up of camera images and sequences
- User configurable acknowledgement requirement for camera images and sequences



Energy package/ISO 50001 compliant:^b

- Heat map
- Sankey/flow chart with any number of nodes and connections between them
- Combined with functions from trending and reporting



^a The functions are included in the order details under "Camera, video".

^b The functions are included in the order details under "Analysis module".

JUMO GmbH & Co. KG
Delivery address: Mackenrodtstraße 14
36039 Fulda, Germany
Postal address: 36035 Fulda, Germany
Phone: +49 661 6003-0
Fax: +49 661 6003-607
Email: mail@jumo.net
Internet: www.jumo.net

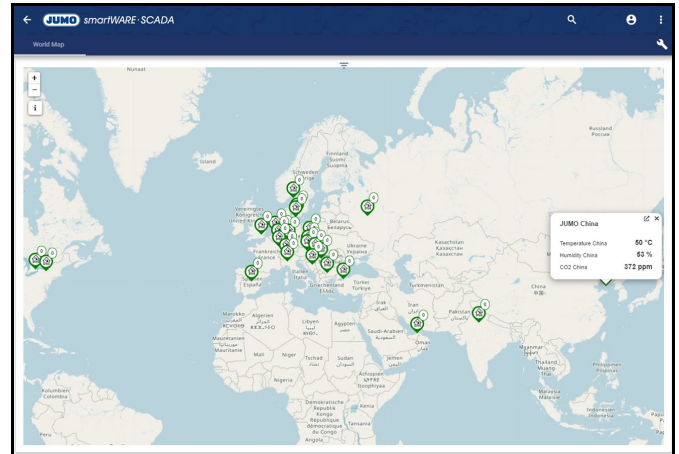
JUMO UK LTD
JUMO House
Temple Bank, Riverway
Harlow, Essex, CM20 2DY, UK
Phone: +44 1279 63 55 33
Fax: +44 1279 62 50 29
Email: sales@jumo.co.uk
Internet: www.jumo.co.uk

JUMO Process Control, Inc.
6724 Joy Road
East Syracuse, NY 13057, USA
Phone: +1 315 437 5866
Fax: +1 315 437 5860
Email: info.us@jumo.net
Internet: www.jumousa.com



Map and GPS integration

- Map as dashboard element
- Display of fixed markers with animation (e.g. malfunction at station) and link
- OpenStreetMap
- Live display of GPS trackers on the map
- Geofencing/position monitoring of GPS trackers^a
- Display and evaluation of past routes using GPS dataEvent-based color representation of individual route sections (e.g. dumping of bilge water)



^a The functions are included in the order details under "advanced events".

JUMO GmbH & Co. KG
 Delivery address: Mackenrodtstraße 14
 36039 Fulda, Germany
 Postal address: 36035 Fulda, Germany
 Phone: +49 661 6003-0
 Fax: +49 661 6003-607
 Email: mail@jumo.net
 Internet: www.jumo.net

JUMO UK LTD
 JUMO House
 Temple Bank, Riverway
 Harlow, Essex, CM20 2DY, UK
 Phone: +44 1279 63 55 33
 Fax: +44 1279 62 50 29
 Email: sales@jumo.co.uk
 Internet: www.jumo.co.uk

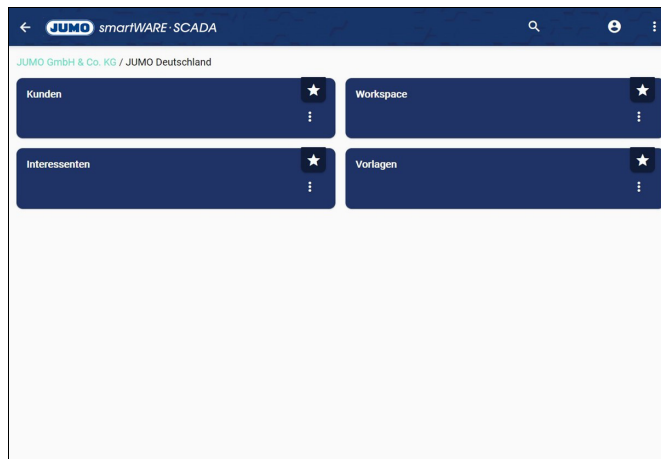
JUMO Process Control, Inc.
 6724 Joy Road
 East Syracuse, NY 13057, USA
 Phone: +1 315 437 5866
 Fax: +1 315 437 5860
 Email: info.us@jumo.net
 Internet: www.jumousa.com



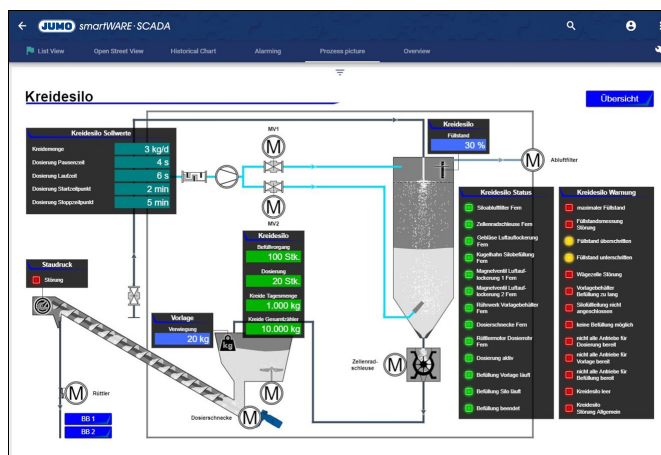
User interface

General information

- Web-based client
- All functions available on the web in German, English, French and Spanish
- Responsible, mobile-device-friendly
- Dashboards as a central element
- User configurable dashboards
- Variety of pre-conceived widgets
- No installation on client computers necessary
- No browser plugins or add-ons
- HTML5 standard
- API for developing your own widget
- Favored browser: Chrome



Client management



Process screen management

Process visualization

- Vector-based, self-scaling process screens
- Editor with integrated animation and test tool
- Screen modules that can be addressed according to object
- Multimonitor support with links for calling up of screens across monitors
- Button for functions including screen change, setting values, calling up of data lists and graphics from the archive
- Setting of values directly or using security dialog
- Value displays with formatting and units
- Color changes with any number of stages depending on the value ranges
- Visibility of 0 to 100 % and any number of stages depending on the value ranges
- Flashing animation depending on the value ranges
- Bargraph function for containers and levels with free direction definition, including for negative values
- Slide animation for moving any number of elements to display their current position
- Display of live data and historical data, e.g. previous day counter and day counter



Login and authentication

JUMO GmbH & Co. KG
Delivery address: Mackenrodtstraße 14
36039 Fulda, Germany
Postal address: 36035 Fulda, Germany
Phone: +49 661 6003-0
Fax: +49 661 6003-607
Email: mail@jumo.net
Internet: www.jumo.net

JUMO UK LTD
JUMO House
Temple Bank, Riverway
Harlow, Essex, CM20 2DY, UK
Phone: +44 1279 63 55 33
Fax: +44 1279 62 50 29
Email: sales@jumo.co.uk
Internet: www.jumo.co.uk

JUMO Process Control, Inc.
6724 Joy Road
East Syracuse, NY 13057, USA
Phone: +1 315 437 5866
Fax: +1 315 437 5860
Email: info.us@jumo.net
Internet: www.jumousa.com



Worth knowing

Software update service

Do you always want the latest and most up-to-date SCADA software? Then order our "Software update service"¹ as an accessory. The part number can be found on the last page of this document.

A software update service is important to maintain the security level, improve performance and ensure compatibility with evolving browsers and technologies. Regular updates protect against hacker attacks, increase efficiency, ensure a smooth user experience and provide access to current and new features.

Test the solution quickly and easily

Would you like to test the SCADA solution quickly and easily without installing it? You can do this easily using our JUMO Cloud solution:

www.jumo.cloud

To do so, simply contact a JUMO contact person of your choice. The JUMO Cloud and JUMO smartWARE SCADA solutions have the same technical basis and same appearance.

Do you need support?

If you need more information, simple explanations, training courses, or support, there are a range of options available to you from JUMO.



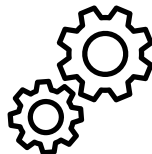
[Online-Help-Center](#)

Detailed
documentation



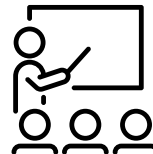
[Technical Support](#)

Questions and information



[JUMO Engineering](#)

Services



[JUMO Campus](#)

Training courses



[YouTube-Channel](#)

Explanatory videos

¹ 20 % of the one-off license price as an annual, cyclical charge for the Software Update Service (SUS). If the SUS is purchased at a later date, the interim period must be paid in full (25% of the current list price per year). Each SCADA sold includes 2 stable updates free of charge (e.g. purchased version: 4.5, then update to 4.6 and 4.7 possible). No unstable updates possible without SUS purchase. The SUS is billed in advance, 6 months after the SCADA license is shipped. Up to 4 stable updates are provided per year.

JUMO GmbH & Co. KG
 Delivery address: Mackenrodtstraße 14
 36039 Fulda, Germany
 Postal address: 36035 Fulda, Germany
 Phone: +49 661 6003-0
 Fax: +49 661 6003-607
 Email: mail@jumo.net
 Internet: www.jumo.net

JUMO UK LTD
 JUMO House
 Temple Bank, Riverway
 Harlow, Essex, CM20 2DY, UK
 Phone: +44 1279 63 55 33
 Fax: +44 1279 62 50 29
 Email: sales@jumo.co.uk
 Internet: www.jumo.co.uk

JUMO Process Control, Inc.
 6724 Joy Road
 East Syracuse, NY 13057, USA
 Phone: +1 315 437 5866
 Fax: +1 315 437 5860
 Email: info.us@jumo.net
 Internet: www.jumousa.com



Technical data

IPC

If no suitable industrial PC (IPC) is available, it can be ordered with the following technical equipment via the accessories (⇒ page 15).
 JUMO smartWARE SCADA is pre-installed on the IPC.

Housing	With cooling system, without fan
Material	Aluminium
Dimensions (W × D × H)	165 mm × 126 mm × 57 mm
Operating system	Ubuntu Desktop 20.04 64 bit LTS
Processor	Intel Core i5-10210U, 4/8 1.6 GHz
RAM	16 GB (2x 8 GB)
Memory/drive	128 GB SSD + 1024 GB Samsung SSD PM9A1 M.2 NVMe
Extensions	
Slot types	M.2, MiniPCle, SIM slot
Graphic connections	HDMI, Displayport
Gigabit LAN	2
Serial interfaces	2 (RS232, RS485)
Can be used as RS232	2
Can be used as RS485	2
USB Port	
2.0	4
3.2 Gen 1 (USB 3.0)	4
Digital I/O	0
Operating temperature	-10 to +60 °C
Mounting	Wall mounting
Protection type	None

JUMO GmbH & Co. KG

Delivery address: Mackenrodtstraße 14
36039 Fulda, Germany
Postal address: 36035 Fulda, Germany
Phone: +49 661 6003-0
Fax: +49 661 6003-607
Email: mail@jumo.net
Internet: www.jumo.net

JUMO UK LTD

JUMO House
Temple Bank, Riverway
Harlow, Essex, CM20 2DY, UK
Phone: +44 1279 63 55 33
Fax: +44 1279 62 50 29
Email: sales@jumo.co.uk
Internet: www.jumo.co.uk

JUMO Process Control, Inc.

6724 Joy Road
East Syracuse, NY 13057, USA
Phone: +1 315 437 5866
Fax: +1 315 437 5860
Email: info.us@jumo.net
Internet: www.jumousa.com



Order details

	(1) Basic type
701820	JUMO smartWARE SCADA – software for process monitoring and control
	(2) Dongle
1	Software dongle
2	Hardware dongle
	(3) Number of signals
100	100 signals (XS_1)
250	250 signals (XS_2)
500	500 signals (S_1)
1000	1000 signals (S_2)
2500	2500 signals (M_1)
5000	5000 signals (M_2)
7500	7500 signals (L_1)
10000	10000 signals (L_2)
	(4) Analysis module
0	None
1	Analysis (XS)
2	Analysis (S)
3	Analysis (M)
4	Analysis (L)
	(5) Advanced events
0	None
1	Advanced events (XS)
2	Advanced events (S)
3	Advanced events (M)
4	Advanced events (L)
	(6) Advanced reporting
0	None
1	Advanced reporting (XS)
2	Advanced reporting (S)
3	Advanced reporting (M)
4	Advanced reporting (L)
	(7) Script module
0	None
1	Script module (XS)
2	Script module (S)
3	Script module (M)
4	Script module (L)
	(8) Standard notification
0	None
1	Standard notification (XS)
2	Standard notification (S)
3	Standard notification (M)
4	Standard notification (L)

JUMO GmbH & Co. KG
 Delivery address: Mackenrodtstraße 14
 36039 Fulda, Germany
 Postal address: 36035 Fulda, Germany
 Phone: +49 661 6003-0
 Fax: +49 661 6003-607
 Email: mail@jumo.net
 Internet: www.jumo.net

JUMO UK LTD
 JUMO House
 Temple Bank, Riverway
 Harlow, Essex, CM20 2DY, UK
 Phone: +44 1279 63 55 33
 Fax: +44 1279 62 50 29
 Email: sales@jumo.co.uk
 Internet: www.jumo.co.uk

JUMO Process Control, Inc.
 6724 Joy Road
 East Syracuse, NY 13057, USA
 Phone: +1 315 437 5866
 Fax: +1 315 437 5860
 Email: info.us@jumo.net
 Internet: www.jumousa.com



(9)	Advanced notification (standard notification included)
0	None
1	Advanced notification (XS)
2	Advanced notification (S)
3	Advanced notification (M)
4	Advanced notification (L)
(10)	Availability planner (can only be selected with item 8 or 9)
0	None
1	Availability planner (XS)
2	Availability planner (S)
3	Availability planner (M)
4	Availability planner (L)
(11)	>2-way alarm (can only be selected with item 8 or 9)
0	None
1	>2-way alarm (XS)
2	>2-way alarm (S)
3	>2-way alarm (M)
4	>2-way alarm (L)
(12)	Scheduler
0	None
1	Scheduler (XS)
2	Scheduler (S)
3	Scheduler (M)
4	Scheduler (L)
(13)	Camera, video
0	None
1	Camera, video (XS)
2	Camera, video (S)
3	Camera, video (M)
4	Camera, video (L)
(14)	Extra codes (optional)
1100	Additional data source
1101	Single driver class A
1102	Driver class A
1103	Driver class B
1106	Driver OPC UA

Explanation of extra codes

Additional data source (extra code 1100):

+ 1 data source is required if more than one gateway is used (OPC UA is included). For each gateway additionally used, "+ 1 data source" is required.

Individual driver class A (extra code 1101):

allows an individual connection to a device with driver class A.

Driver class A (extra code 1102):

allows a large number of connections to a driver of type class A (S7 TCP, Modbus, ADS.NET, M-Bus, KNX, OPC DA, SNMP).

Driver class B (extra code 1103):

allows a large number of connections to a driver of type class B (BACnet, CSV, REST API, SQL, IEC 61850, IEC 60870-104, OCPP).

Example:

15 edge gateways are required, whereby 8 have to communicate with a single Modbus device: 14 times extra code 1100 + 8 times extra code 1101.

JUMO GmbH & Co. KG
Delivery address: Mackenrodtstraße 14
36039 Fulda, Germany
Postal address: 36035 Fulda, Germany
Phone: +49 661 6003-0
Fax: +49 661 6003-607
Email: mail@jumo.net
Internet: www.jumo.net

JUMO UK LTD
JUMO House
Temple Bank, Riverway
Harlow, Essex, CM20 2DY, UK
Phone: +44 1279 63 55 33
Fax: +44 1279 62 50 29
Email: sales@jumo.co.uk
Internet: www.jumo.co.uk

JUMO Process Control, Inc.
6724 Joy Road
East Syracuse, NY 13057, USA
Phone: +1 315 437 5866
Fax: +1 315 437 5860
Email: info.us@jumo.net
Internet: www.jumousa.com



Order code

Order example

(1)

(2)

(3)

(4)

(5)

(6)

(7)

(8)

701820

/

2

-

500

-

2

-

2

-

2

-

2

-

0

-

(9)

(10)

(11)

(12)

(13)

(14)

0

-

0

-

2

-

2

-

0

/

1106

Accessories

Designation	Part no.
Software update service	00748787
IPC with pre-installed JUMO smartWARE SCADA	30049882

JUMO smartWARE SCADA can only be used on the industrial PC (IPC) by purchasing a separate license. It is not necessary to install the software on the IPC as it is pre-installed.